

PROGRAMMING MANUAL

MULTI RANGE DC POWER SUPPLY PSW SERIES



■ About a trademark, a registered trademark

A company name and the brand name mentioned in this instruction manual are the trademark or the registered trademark of each company or group in each country and region.

■ About this instruction manual

Permission from the copyright holder is needed to reprint the contents of this manual, in whole or in part. Be aware that the product specifications and the contents of this manual are subject to change for the purpose of improvement. For the purpose of considering the environment and reducing waste, we are progressively eliminating the paper or CD manuals attached to our products. The latest version of the instruction manual is posted on our website. (<https://www.texio.co.jp/download/>)

■ About firmware version

This programming manual is required firmware version 2.25 or higher.

INDEX

1. Configuration Settings	1
1.1 Setting Configuration Settings	1
2. REMOTE CONTROL	6
2.1 Interface Configuration	6
2.1.1 USB Remote Interface	6
2.1.2 Configure GP-IB Interface.....	6
2.1.3 Configure RS-232C Interface.....	7
2.1.4 Configure Ethernet Connection.....	7
2.1.5 Web Server Configuration.....	9
2.1.6 Sockets Server Configuration	9
2.1 Interface check.....	9
2.1.1 USB Remote Control Function Check	9
2.1.2 Web Server Remote Control Function Check.....	11
2.1.3 Socket Server Function Check	11
3. Command Syntax	15
4. Command List	17
4.1 Common Commands	17
4.1.1 *CLS.....	17
4.1.2 *ESE.....	17
4.1.3 *ESR	17
4.1.4 *IDN.....	17
4.1.5 *OPC.....	18
4.1.6 *RST.....	18
4.1.7 *SRE	18
4.1.8 *STB.....	18
4.1.9 *TRG	19
4.1.10 *TST	20
4.1.11 *WAI.....	20
4.2 Abort Commands	20
4.2.1 ABORT.....	20
4.3 Apply Commands.....	21
4.3.1 APPLY	21
4.4 Display Commands.....	22
4.4.1 DISPlay:MENU[:NAME]	22
4.4.2 DISPlay[:WINDow]:TEXT:CLEAr	22
4.4.3 DISPlay[:WINDow]:TEXT[:DATA]	22
4.4.4 DISPlay:BLINK	23
4.5 Initiate Commands.....	23
4.5.1 INITiate[:IMMediate]:NAME	23
4.6 Measure Commands	24

4.6.1	MEASure[:SCALar]:CURRent[:DC]	24
4.6.2	MEASure[:SCALar]:VOLTage[:DC]	24
4.6.3	MEASure[:SCALar]:POWER[:DC]	24
4.7	Output Commands	24
4.7.1	OUTPut:DElay:ON	24
4.7.2	OUTPut:DElay:OFF	24
4.7.3	OUTPut:MODE	25
4.7.4	OUTPut[:STATe][:IMMEdiate]	25
4.7.5	OUTPut[:STATe]:TRIGgered	25
4.7.6	OUTPut:PROTection:CLEar	27
4.7.7	OUTPut:PROTection:TRIPped	27
4.8	Sense Commands	27
4.8.1	SENSe:AVERAge:COUNT	27
4.9	Status Commands	27
4.9.1	STATus:OPERation[:EVENT]	27
4.9.2	STATus:OPERation:CONDition	28
4.9.3	STATus:OPERation:ENABle	28
4.9.4	STATus:OPERation:PTRansition	28
4.9.5	STATus:OPERation:NTRansition	28
4.9.6	STATus:QUEStionable[:EVENT]	29
4.9.7	STATus:QUEStionable:CONDition	29
4.9.8	STATus:QUEStionable:ENABle	29
4.9.9	STATus:QUEStionable:PTRansition	29
4.9.10	STATus:QUEStionable:NTRansition	30
4.9.11	STATus:PRESet	30
4.10	Source Commands	30
4.10.1	[SOURce:]CURRent[:LEVel][:IMMEdiate][:AMPLitude]	30
4.10.2	[SOURce:]CURRent[:LEVel]:TRIGgered[:AMPLitude]	31
4.10.3	[SOURce:]CURRent:PROTection[:LEVel]	31
4.10.4	[SOURce:]CURRent:PROTection:STATe	32
4.10.5	[SOURce:]CURRent:SLEW:RISing	33
4.10.6	[SOURce:]CURRent:SLEW:FALLing	34
4.10.7	[SOURce:]RESistance[:LEVel][:IMMEdiate][:AMPLitude]	35
4.10.8	[SOURce:]VOLTage[:LEVel][:IMMEdiate][:AMPLitude]	36
4.10.9	[SOURce:]VOLTage[:LEVel]:TRIGgered[:AMPLitude]	36
4.10.10	[SOURce:]VOLTage:PROTection[:LEVel]	36
4.10.11	[SOURce:]VOLTage:SLEW:RISing	37
4.10.12	[SOURce:]VOLTage:SLEW:FALLing	37
4.11	System control setting Commands	38
4.11.1	SYSTem:BEEP[:IMMEdiate]	38
4.11.2	SYSTem:CONFIgure:BEEP[:STATe]	38
4.11.3	SYSTem:CONFIgure:BLEeder[:STATe]	39
4.11.4	SYSTem:CONFIgure:BTRip[:IMMEdiate]	39

4.11.5	SYSTem:CONFIgure:BTRip:PROTEction	39
4.11.6	SYSTem:CONFIgure:CURREnt:CONTrol	40
4.11.7	SYSTem:CONFIgure:VOLTage:CONTrol	40
4.11.8	SYSTem:CONFIgure:MSLave	40
4.11.9	SYSTem:CONFIgure:OUTPut:EXTernal[:MODE]	41
4.11.10	SYSTem:CONFIgure:OUTPut:PON[:STATE]	42
4.12	Communication system configuration Commands	42
4.12.1	SYSTem:COMMunicate:ENABLE	42
4.12.2	SYSTem:COMMunicate:GPIB[:SELF]:ADDRess	42
4.12.3	SYSTem:COMMunicate:LAN:IPADDRess	43
4.12.4	SYSTem:COMMunicate:LAN:GATEway	43
4.12.5	SYSTem:COMMunicate:LAN:SMASk	43
4.12.6	SYSTem:COMMunicate:LAN:MAC	44
4.12.7	SYSTem:COMMunicate:LAN:DHCP	44
4.12.8	SYSTem:COMMunicate:LAN:DNS	44
4.12.9	SYSTem:COMMunicate:LAN:HOSTname	44
4.12.10	SYSTem:COMMunicate:LAN:WEB:PACTive	46
4.12.11	SYSTem:COMMunicate:LAN:WEB:PASSword	46
4.12.12	SYSTem:COMMunicate:RLState	46
4.12.13	SYSTem:COMMunicate:USB:FRONT:STATe	47
4.12.14	SYSTem:COMMunicate:USB:REAR:STATe	47
4.12.15	SYSTem:COMMunicate:USB:REAR:MODE	47
4.13	System Settings Commands	48
4.13.1	SYSTem:ERRor	48
4.13.2	SYSTem:KEYLock:MODE	48
4.13.3	SYSTem:KLOCK	48
4.13.4	SYSTem:INFormation	48
4.13.5	SYSTem:PRESet	49
4.13.6	SYSTem:VERSion	49
4.14	Trigger Commands	49
4.14.1	TRIGger:TRANSient[:IMMEDIATE]	49
4.14.2	TRIGger:TRANSient:SOURce	49
4.14.3	TRIGger:OUTPut[:IMMEDIATE]	50
4.14.4	TRIGger:OUTPut:SOURce	50
4.14.5	Trigger Commands Examples	50
5.	Status Register Overview	52
5.1	Introduction to the status register	52
5.2	Configuration status register	53
5.3	Questionable Status Register Group	54
5.4	Operation Status Register Group	56
5.5	Standard Event Status Register Group	57
5.6	Status register group	59
5.7	Error code	61

6. Appendix	62
6.1 PSW Default Settings	62
6.2 Error Messages & Messages	64

1. Configuration Settings

1.1 Setting Configuration Settings

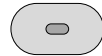
Background The normal configuration settings (F-01~F-61, F-88, F-89) are used to configure or view system settings. Use the following operation steps when configuring the interface settings used in the Remote Control chapter.
Ensure the load is not connected.
Ensure the output is off.



Note

Configuration settings F-90~F-95 cannot be edited in the Normal Function Settings. See the user manual for details.
The F-89 settings can only be viewed, not set.

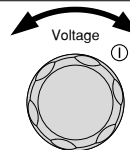
Steps. 1. Press the Function key. The function key will light up. **Function**



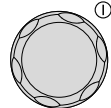
2. The display will show F-01 on the top and the configuration setting for F-01 on the bottom.



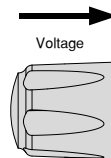
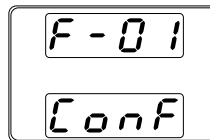
3. Rotate the voltage knob to change the F setting.
Range F-00~ F-61, F-88, F-89



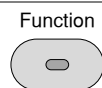
4. Use the current knob to set the parameter for the chosen F setting.



5. Press the Voltage knob to save the configuration setting. Conf will be displayed when successful.



Exit Press the Function key again to exit the configuration settings.
The function key light will turn off.



Configuration Table

Please use the configuration settings listed below when applying the configuration settings.

Normal Function Settings	Setting	Setting Range
Output ON delay time	F-01	0.00s~99.99s
Output OFF delay time	F-02	0.00s~99.99s
V-I mode slew rate select	F-03	0 = CV high speed priority 1 = CC high speed priority 2 = CV slew rate priority 3 = CC slew rate priority
Rising voltage slew rate	F-04	0.01V/s~60.00V/s (PSW -XX L30) 0.1V/s~160.0V/s (PSW -XX L80) 0.1V/s~320.0V/s (PSW-XX M160) 0.1V/s~500.0V/s (PSW-XXM250) 1V/s~1600V/s (PSW-XXH800)
Falling voltage slew rate	F-05	0.01V/s~60.00V/s (PSW -XX L30) 0.1V/s~160.0V/s (PSW -XX L80) 0.1V/s~320.0V/s (PSW-XX M160) 0.1V/s~500.0V/s (PSW-XXM250) 1V/s~1600V/s (PSW-XXH800)
Rising current slew rate	F-06	0.01A/s~72.00A/s (PSW-360L30) 0.1A/s~144.0A/s (PSW-720L30) 0.1A/s~216.0A/s (PSW-1080L30) 0.01A/s~27.00A/s (PSW-360L80) 0.01A/s~54.00A/s (PSW-720L80) 0.01A/s~81.00A/s (PSW-1080L80) 0.01A/s~14.40A/s (PSW-360M160) 0.01A/s~28.80A/s (PSW-720M160) 0.01A/s~43.20A/s (PSW-1080M160) 0.001A/s~9.000A/s (PSW-360M250) 0.01A/s~18.00A/s (PSW-720M250) 0.01A/s~27.00A/s (PSW-1080M250) 0.001A/s~2.880A/s (PSW-360H800) 0.001A/s~5.760A/s (PSW-720H800) 0.001A/s~8.640A/s (PSW-1080H800)

Falling current slew rate	F-07	0.01A/s~72.00A/s (PSW-360L30) 0.1A/s~144.0A/s (PSW-720L30) 0.1A/s~216.0A/s (PSW-1080L30) 0.01A/s~27.00A/s (PSW-360L80) 0.01A/s~54.00A/s (PSW-720L80) 0.01A/s~81.00A/s (PSW-1080L80) 0.01A/s~14.40A/s (PSW-360M160) 0.01A/s~28.80A/s (PSW-720M160) 0.01A/s~43.20A/s (PSW-1080M160) 0.001A/s~9.000A/s (PSW-360M250) 0.01A/s~18.00A/s (PSW-720M250) 0.01A/s~27.00A/s (PSW-1080M250) 0.001A/s~2.880A/s (PSW-360H800) 0.001A/s~5.760A/s (PSW-720H800) 0.001A/s~8.640A/s (PSW-1080H800)
Internal resistance setting	F-08	0.000Ω~0.833Ω (PSW-360L30) 0.000Ω~0.417Ω (PSW-720L30) 0.000Ω~0.278Ω (PSW-1080L30) 0.000Ω~5.926Ω (PSW-360L80) 0.000Ω~2.963Ω (PSW-720L80) 0.000Ω~1.975Ω (PSW-1080L80) 0.000Ω~22.222Ω (PSW-360M160) 0.000Ω~11.111Ω (PSW-720M160) 0.000Ω~7.407Ω (PSW-1080M160) 0.00Ω ~ 55.55Ω (PSW-360M250) 0.00Ω ~ 27.77Ω (PSW-720M250) 0.00Ω ~ 18.51Ω (PSW-1080M250) 0.0Ω ~ 555.5Ω (PSW-360H800) 0.0Ω ~ 277.8Ω (PSW-720H800) 0.0Ω ~ 185.1Ω (PSW-1080H800)
Bleeder circuit control	F-09	0 = OFF, 1 = ON, 2 = AUTO
Buzzer ON/OFF control	F-10	0 = OFF, 1 = ON
Measurement Average Setting	F-17	0 = Low, 1 = Middle, 2 = High
Lock Mode	F-19	0 = Panel lock: allow output off 1 = Panel lock: allow output on/off
USB/GPIB settings		
Front panel USB State *	F-20	0 = Absent, 1 = Mass Storage
Rear panel USB State *	F-21	0 = Absent, 2 = USB-CDC, 3 = GPIB adapter, 5 = RS-232C adaptor
Rear panel USB mode *	F-22	0 = Disable, 1 = I/F adapter (GP-IB/RS-232C) 2 = USB CDC, 3 = USB CDC(Full speed)
GPIB address	F-23	0~30
LAN settings		
MAC Address-1 *	F-30	0x00~0xFF
MAC Address-2 *	F-31	0x00~0xFF

MAC Address-3 *	F-32	0x00~0xFF
MAC Address-4 *	F-33	0x00~0xFF
MAC Address-5 *	F-34	0x00~0xFF
MAC Address-6 *	F-35	0x00~0xFF
LAN	F-36	0 = Disable, 1 = Enable
DHCP	F-37	0 = Disable, 1 = Enable
IP Address-1	F-39	0~255
IP Address-2	F-40	0~255
IP Address-3	F-41	0~255
IP Address-4	F-42	0~255
Subnet Mask-1	F-43	0~255
Subnet Mask-2	F-44	0~255
Subnet Mask-3	F-45	0~255
Subnet Mask-4	F-46	0~255
Gateway-1	F-47	0~255
Gateway-2	F-48	0~255
Gateway-3	F-49	0~255
Gateway-4	F-50	0~255
DNS address -1	F-51	0~255
DNS address -2	F-52	0~255
DNS address -3	F-53	0~255
DNS address -4	F-54	0~255
Sockets active	F-57	0 = Disable, 1 = Enable
Web Server active	F-59	0 = Disable, 1 = Enable
Web password active	F-60	0 = Disable, 1 = Enable
Web setting password	F-61	0000~9999
RS-232C(GUR-001/GUR-001A)		
Baudrate	F-71	0(1200bps)~7(115200bps)
Data length	F-72	0(7bit), 1(8bit)
Parity	F-73	0(none), 1(odd), 2(even)
Stop bit	F-74	0(1bit), 1(2bit)
System Settings		
Factory Set Value	F-88	0 = Disable 1 = Return to factory settings
Show Version	F-89	0, 1 = PSW version 2, 3 = PSW build year 4, 5 = PSW build month/day 6, 7 = Keyboard CPLD version 8, 9 = Analog-Control CPLD version A, B = Reserved C, D = Kernel build year E, F = Kernel build month/day G, H = Test command version I, J = Test command build year K, L = Test command build month/day
Power On Configuration Settings*		

CV Control	F-90	0 = Panel control (local) 1 = External voltage control 2 = External resistance control (Ext-R 10kΩ = Vo, max) 3 = External resistance control (Ext-R10kΩ = 0)
CC Control	F-91	0 = Panel control (local) 1 = External voltage control 2 = External resistance control (Ext-R 10kΩ = Io,max) 3 = External resistance control (Ext-R10kΩ = 0)
Power-ON Output	F-92	0 = OFF at startup, 1 = On at startup t001 ~ t010 = run testscript t001 ~ t010
Master/Slave	F-93	0 = Master/Local 1 = Master/Parallel1 2 = Master/Parallel2 3 = Slave/Parallel 4 = Slave/Series(30V/80V/160V only)
External Out Logic	F-94	0 = High ON, 1 = Low ON
Power Switch trip	F-95	0 = Enable 1 = Disable



*Note

* Items marked with are for display only. They can not be set at normal settings.
The Power On configuration settings can only be changed during power up to prevent the configuration settings being inadvertently changed.

2. REMOTE CONTROL

This chapter describes basic configuration of IEEE488.2 based remote control.

2.1 Interface Configuration

2.1.1 USB Remote Interface

USB configuration	PC side connector	Type A, host
	PSW side connector	Rear panel Type B, slave
	Speed	1.1/2.0 (full speed/high speed)
	USB Class	CDC (communications device class)



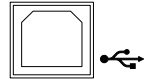
Note

Panel operation

To use USB remote control, you need to install the USB device driver (inf file). The USB device driver can be downloaded from our HP.

1. Connect the USB cable to the rear panel USB B port.

2. Press the Function key to enter the Normal configuration settings.



Set the following USB settings:

F-22 = 2 Set the rear panel USB port to USB-CDC.

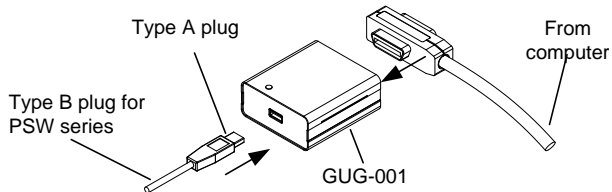
F-22 = 3 Set the rear panel USB port to USB-CDC (Full speed only)

2.1.2 Configure GP-IB Interface

To use GP-IB, the optional GP-IB to USB (GUG-001) adapter must be used. The GP-IB to USB adapter must be connected before the PSW is turned on. Only one GP-IB address can be used at a time.

Configure GP-IB

1. Ensure the PSW is off before proceeding.
2. Connect the USB cable from the rear panel USB B port on the PSW to the USB A port on the GP-IB to USB adapter.
3. Connect a GP-IB cable from a GP-IB controller to the GP-IB port on the adapter.



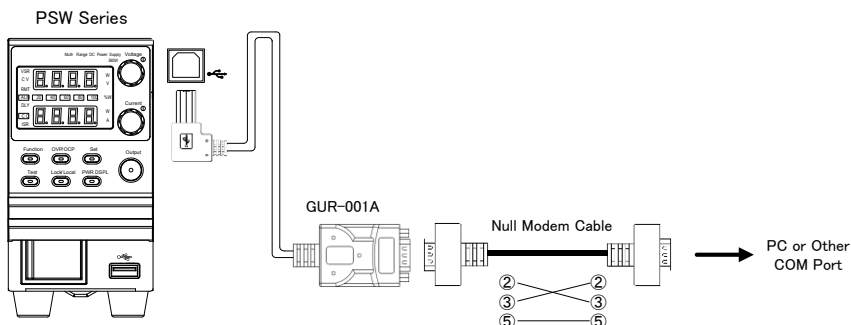
4. Turn the PSW on.
5. Press the Function key to enter the Normal configuration settings. Set the following GP-IB settings:

	F-22 = 1	Set the rear panel USB port to GPIB-USB (GUG-001)
	F-23 = 0~30	Set the GP-IB address (0~30/Default: 8)
GP-IB constraints	Maximum 15 devices altogether, 20m cable length, 2m between each device	
	Unique address assigned to each device	
	At least 2/3 of the devices turned On	
	No loop or parallel connection	

2.1.3 Configure RS-232C Interface

To use RS-232C, the optional RS-232C to USB (GUR-001 Series) adapter must be used.

- Configure RS-232C
1. Ensure the PSW is off before proceeding.
 2. Connect the USB cable from the rear panel USB B port on the PSW to the USB A port on the RS-232C to USB adapter. Connect the connector and controller with a null modem cable.



3. Turn the PSW on.
4. Press the Function key to enter the Normal configuration settings.

Set the following RS-232C settings

- | | |
|--------------|--|
| F-22 = 1 | Set the rear panel USB port to RS-232C to USB (GUR-001 series) |
| F-71 = 0~7 | Set Baud rate |
| F-72 = 0/1 | Set Data bit |
| F-73 = 0/1/2 | Set parity |
| F-74 = 0/1 | Set Stop bit |

RS-232C constraints GUR-001 is only available for firmware version V1.76 or above, GUR-001A/B is only available for firmware version V2.25 or above.
Delimiter :LF

2.1.4 Configure Ethernet Connection

The Ethernet interface can be configured for a number of different applications. Ethernet can be configured for basic remote control or monitoring using a web server or it can be configured as a socket server.

The PSW series supports both DHCP connections so the instrument can be automatically connected to an existing network or alternatively, network settings can be manually configured.

Ethernet
configuration
Parameters

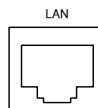
MAC Address
(display only)
DHCP
Subnet Mask
DNS Address
Web Server Active
Web set password
Port number : 2268(Fixed)

LAN
IP Address
Gateway
Sockets Active
Web Password Active
0000~9999(default 0000)

2.1.5 Web Server Configuration

Configuration This configuration example will configure the PSW as a web server and use DHCP to automatically assign an IP address to the PSW.

1. Connect an Ethernet cable from the network to the rear panel Ethernet port.
2. Press the Function key to enter the Normal configuration settings.



Set the following LAN settings:

F-36 = 1	Enable LAN
F-37 = 1	Turn DHCP to enable
F-59 = 1	Turn the web server on



Note

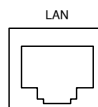
It may be necessary to cycle the power or refresh the web browser to connect to a network.

2.1.6 Sockets Server Configuration

Configuration This configuration example will configure the PSW for web sockets control.

The following configuration settings will manually assign the PSW an IP address and enable web sockets. By default, the socket port number is 2268 and cannot be configured.

1. Connect an Ethernet cable from the network to the rear panel Ethernet port.
2. Press the Function key to enter the Normal configuration settings.



3. Set the following LAN settings:

F-36 = 1	Enable LAN
F-37 = 0	Disable DHCP
F-39 = 172	IP Address part 1 of 4
F-40 = 16	IP Address part 2 of 4
F-41 = 5	IP Address part 3 of 4
F-42 = 133	IP Address part 4 of 4
F-43 = 255	Subnet Mask part 1 of 4
F-44 = 255	Subnet Mask part 2 of 4
F-45 = 128	Subnet Mask part 3 of 4
F-46 = 0	Subnet Mask part 4 of 4
F-43 = 172	Gateway part 1 of 4
F-44 = 16	Gateway part 2 of 4
F-45 = 21	Gateway part 3 of 4
F-46 = 101	Gateway part 4 of 4
F-57 = 1	Enable Sockets



Note

The socket function is only available for firmware version V1.12 or above. See the user manual to check your firmware version number.

2.1 Interface check

2.1.1 USB Remote Control Function Check

Functionality check If PSW is not recognized by the COM port, install a driver (TEXIO_CDC.inf) from our Homepage. The USB device driver

of psw is more downloadable than our homepage .
When USB connects psw to a computer for the first time,
installation of the USB device driver is required.

Please perform the installation from the Device Manager if a
computer can't recognize psw.

Control Panel – All Control Panel Items – Device Manager –
Other Device – PSW (Right click)
– Update driver Software

Please prepare the Terminal application(Such as PuTTY or RealTerm).

Serial communication settings are as follows.

Baud rate	: 9600bps	Data length	: 8bit
Parity bit	: None	Stop bits	: 1bit
Flow control	: None		

Run this query command via the terminal after the instrument has been
configured for USB remote control.

*idn?

This should return the Manufacturer, Model number, Serial number, and
Firmware version in the following format.

TEXIO,PSW-360L30,GTW123456,01.00.20110101

Manufacturer :TEXIO

Model number :PSW-360L30

Serial number :GTW123456

Firmware version :01.00.20110101

Termination character of commands and queries use the ^j(LF:Line
Feed).

2.1.2 Web Server Remote Control Function Check

Functionality check Enter the IP address of the power supply in a web browser after the instrument has been configured as a web server

http:// XXX.XXX.XXX.XXX

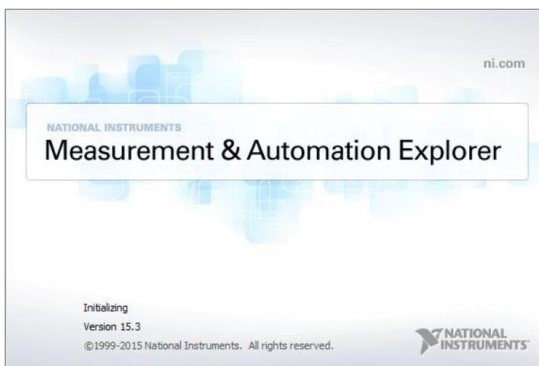
The web browser interface appears.

2.1.3 Socket Server Function Check

Background To test the socket server functionality, National Instruments Measurement and Automation Explorer can be used. This program is available on the NI website, www.ni.com., via a search for the VISA Run-time Engine page, or “downloads” at the following URL, <http://www.ni.com/visa/>

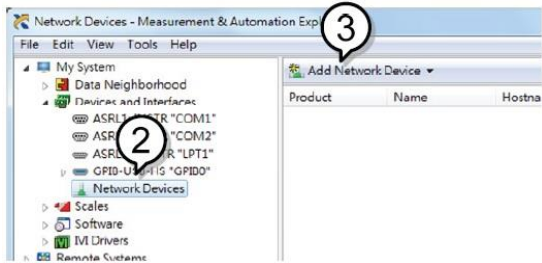
Requirements PC Operating System(OS): Windows 7 or higher

Functionality check 1. Start the NI Measurement and Automation Explorer (MAX) program.
start>All PROGRAM>National Instruments>Measurement & Automation

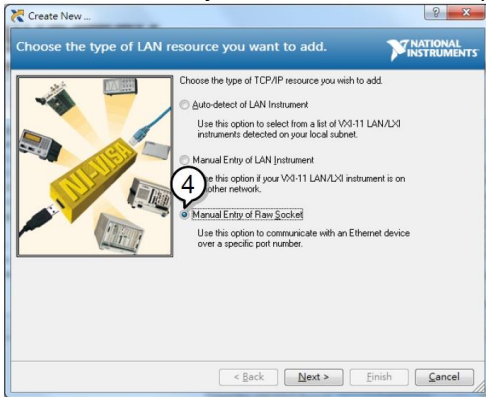


Display and operated by a version of NI-MAX is different. Please operate in accordance with the version you are using.

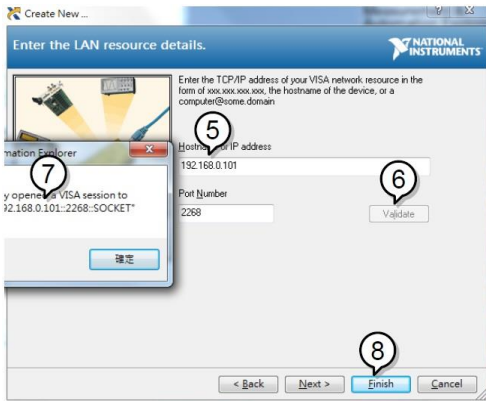
2. From the Configuration panel access *My System>Devices and Interfaces>Network Devices*
3. Press *Add New Network Device>Visa TCP/IP Resource...*



4. Select *Manual Entry of Raw Socket* from the popup window.



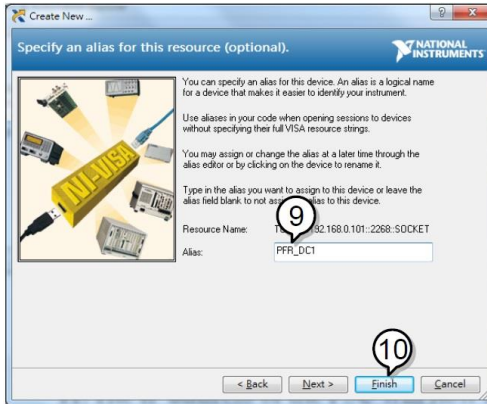
5. Enter the IP address and the port number of the PSW. The port number is fixed at 2268.
6. Click the *Validate* button.
7. A popup will appear if a connection is successfully established.
8. Click *Next*.



9. Next configure the Alias (name) of the PSW connection.

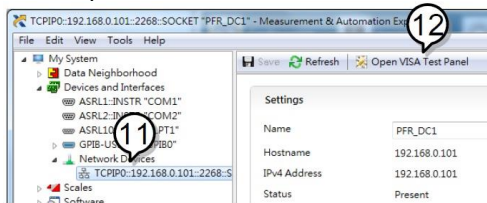
Example: PSW-100_DC1

10. Click *finish*.



11. The IP address of the PSW will now appear under Network Devices in the configuration panel. Select this icon now.

12. Press *Open VISA Test Panel*.

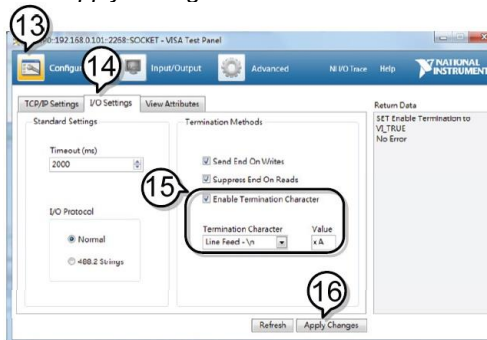


13. Click the *Configuration* icon.

14. Click on *I/O Settings*.

15. Make sure the *Enable Termination Character* check box is checked, and the terminal character is \n (Value: xA).

16. Click *Apply Changes*.



17. Click the *Input/Output* icon.

18. Enter *IDN? in the *Select or Enter Command* dialog box if it

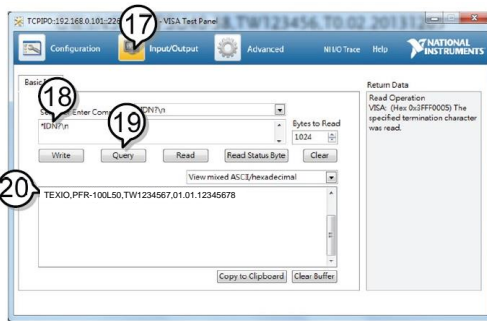
is not already.

19. Click the *Query* button.

20. The *IDN? query will return the Manufacturer, model name, serial number and firmware version in the dialog box.

TEXIO,PSW-360L30,GTW1234567,01.01.12345678

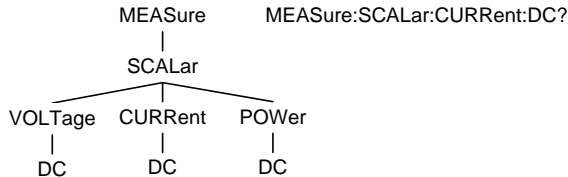
Manufacturer: TEXIO
Model name : PSW-360L30
Serial number : GTW1234567
Firmware version : 01.01.12345678



3. Command Syntax

Compatible Standard	IEEE488.2 SCPI 1999	Partial compatibility Partial compatibility
Command Structure	SCPI commands follow a tree-like structure, organized into nodes. Each level of the command tree is a node. Each keyword in a SCPI command represents each node in the command tree. Each keyword (node) of a SCPI command is separated by a colon (:).	

For example, the diagram below shows an SCPI sub-structure and a command example.



Command types	There are a number of different instrument commands and queries. A command sends instructions or data to the unit and a query receives data or status information from the unit.
Command types	
Simple Example	A single command with/without a parameter *IDN?
Query	A query is a simple or compound command followed by a question mark (?). A parameter (data) is returned.
Example	meas:curr:dc?
Compound	Two or more commands on the same command line. Compound commands are separated with either a semi-colon (;) or a semi-colon and a colon (;:). A semi-colon is used to join two related commands, with the caveat that the last command must begin at the last node of the first command. A semi-colon and colon are used to combine two commands from different nodes.
Example	meas:volt:dc?;:meas:curr:dc?
Command Forms	Commands and queries have two different forms, long and short. The command syntax is written with the short form of the command in capitals and the remainder (long form) in lower case. The commands can be written in capitals or lower-case, just so long as the short or long forms are complete. An incomplete command will not be recognized. Below are examples of correctly written commands.
Long form	STATus:OPERation:NTRansition? STATUS:OPERATION:NTRANSITION? status:operation:ntransition?

	Short form	STAT:OPER:NTR? stat:oper:ntr?																								
Square Brackets	Commands that contain square brackets indicate that the contents are optional. The function of the command is the same with or without the square bracketed items, as shown below. Both "DISPlay:MENU[:NAME]?" and "DISPlay:MENU?" are both valid forms.																									
Command Format	<p>APPLY 1.5,5.2</p> <p>1 2 3 4 5</p>	<ol style="list-style-type: none"> 1. Command header 2. Space 3. Parameter 1 4. Comma (no space before/after comma) 5. Parameter 2 																								
Parameters	<table border="1"> <thead> <tr> <th>Type</th> <th>Description</th> <th>Example</th> </tr> </thead> <tbody> <tr> <td><Boolean></td> <td>Boolean logic</td> <td>0, 1</td> </tr> <tr> <td><NR1></td> <td>integers</td> <td>0, 1, 2, 3</td> </tr> <tr> <td><NR2></td> <td>decimal numbers</td> <td>0.1, 3.14, 8.5</td> </tr> <tr> <td><NR3></td> <td>floating point</td> <td>4.5e-1, 8.25e+1</td> </tr> <tr> <td><NRf></td> <td>any of NR1, 2, 3</td> <td>1, 1.5, 4.5e-1</td> </tr> <tr> <td><string></td> <td>Sets the eight characters of 20H ~ 7EH of ASCII characters. Must be enclosed in quotation marks (") string.</td> <td></td> </tr> <tr> <td><block data></td> <td>Definitive length arbitrary block data. A single decimal digit followed by data. The decimal digit specifies how many 8-bit data bytes follow.</td> <td></td> </tr> </tbody> </table>	Type	Description	Example	<Boolean>	Boolean logic	0, 1	<NR1>	integers	0, 1, 2, 3	<NR2>	decimal numbers	0.1, 3.14, 8.5	<NR3>	floating point	4.5e-1, 8.25e+1	<NRf>	any of NR1, 2, 3	1, 1.5, 4.5e-1	<string>	Sets the eight characters of 20H ~ 7EH of ASCII characters. Must be enclosed in quotation marks (") string.		<block data>	Definitive length arbitrary block data. A single decimal digit followed by data. The decimal digit specifies how many 8-bit data bytes follow.		
Type	Description	Example																								
<Boolean>	Boolean logic	0, 1																								
<NR1>	integers	0, 1, 2, 3																								
<NR2>	decimal numbers	0.1, 3.14, 8.5																								
<NR3>	floating point	4.5e-1, 8.25e+1																								
<NRf>	any of NR1, 2, 3	1, 1.5, 4.5e-1																								
<string>	Sets the eight characters of 20H ~ 7EH of ASCII characters. Must be enclosed in quotation marks (") string.																									
<block data>	Definitive length arbitrary block data. A single decimal digit followed by data. The decimal digit specifies how many 8-bit data bytes follow.																									
Message Terminator	LF	Line feed code																								

4. Command List

4.1 Common Commands

4.1.1 *CLS

Set →

Description	The *CLS command clears the Standard Event Status, Operation Status and Questionable Status registers. The corresponding Enable registers in each of the above registers are not cleared. If a <NL> newline code immediately precedes a *CLS command, the Error Que and the MAV bit in the Status Byte Register is also cleared.
Syntax	*CLS
Example	*CLS Clear the event status register of Standard register and Operation register and Questionable register.

Set →
→ Query

4.1.2 *ESE

Description	Sets or queries the Standard Event Status Enable register.
Syntax	*ESE <NR1>
Query Syntax	*ESE?
Parameter	<NR1> 0~255
Example	*ESE 255 Sets the Standard Event Status Enable register.
Query example	*ESE? >255 Return the setting value of the Standard Event Status Enable register.

4.1.3 *ESR

→ Query

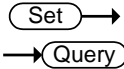
Description	Queries the Standard Event Status (Event) register. The Event Status register is cleared after it is read.
Query Syntax	*ESR?
Return parameter	<NR1> 0~255
Query example	*ESR? >255 Return the value of Standard Event Status register.

4.1.4 *IDN

→ Query

Description	Queries the manufacturer, model name, serial number, and firmware version of the PSW.
Query Syntax	*IDN?
Return parameter	Returns the instrument identification as a string in the following format: <string> Manufacturer:TEXIO <string> Model number : PSWxxxxxx <string> Serial number :TW123456 <string> Firmware version : 01.00.20110101

Query example	*IDN? > TEXIO,PSWxxxxxx,TW123456,01.00.20110101 Return the device information.
---------------	--



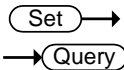
4.1.5 *OPC

Description	The *OPC command sets the OPC bit (bit0) of the Standard Event Status Register when all current commands have been processed. The *OPC? Query returns 1 when all the outstanding commands have completed.
Syntax	*OPC
Query Syntax	*OPC?
Return parameter	<Boolean> Returns 1 when all the outstanding commands have completed.
Example	*OPC Sets the OPC command.
Query example	*OPC? >1 Returns 1 when all the outstanding commands have completed.



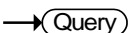
4.1.6 *RST

Description	Performs a device reset. Configures the unit to a known configuration (default settings). This known configuration is independent of the usage history.
Syntax	*RST
Example	*RST Run a reset of the device.



4.1.7 *SRE

Description	Sets or queries the Service Request Enable register. The Service Request Enable register determines which registers of the Status Byte register are able to generate service requests.
Syntax	*SRE <NR1>
Query Syntax	*SRE?
parameter	<NR1> 0-255
Example	*SRE 32 Sets the service request enable register.
Query example	*SRE? >32 Return the settings of the service request enable register.



4.1.8 *STB

Description	Queries the bit sum of the Status Byte register with MSS (Master summary Status).
Query Syntax	*STB?
Return parameter	<NR1> 0-255

Query	*STB?
example	>4 Returns the bit sum of the Status Byte register with the MSS bit (bit 6).

4.1.9 *TRG



Description	The *TRG command is able to generate a “get”(Group Execute Trigger). If the PSW cannot accept a trigger at the time of the command, an error message is generated (-211, “Trigger ignored”).
Syntax	*TRG
Example	*TRG Sets the trigger.

4.1.10 *TST

→ Query

Description	Executes a self test.	
Query Syntax	*TST?	
Return parameter	<NR1>	Returns the code of self-test. (No error = 0)
Query	*TST?	
example	>0	Returns an error code if there is an error.

4.1.11 *WAI

Set →

Description	Prevents any other commands or queries from being executed until all outstanding commands have completed.	
Syntax	*WAI	
Example	*WAI	Run the process the WAI commands.

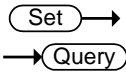
4.2 Abort Commands

4.2.1 ABORt

Set →

Description	The ABORt command will cancel any triggered actions.	
Syntax	ABORt	
Example	ABOR	Cancel trigger action.

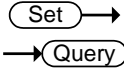
4.3 Apply Commands



4.3.1 APPLy

Description	<p>The APPLy command is used to set both the voltage and current. The voltage and current will be output as soon as the function is executed if the programmed values are within the accepted range.</p> <p>An execution error will occur if the programmed values are not within accepted ranges.</p> <p>The Apply command will set the voltage/current values but these values will not be reflected on the display until the Output is On or if the DISPlay:MENU:NAME 3 (set menu) command is used.</p>	
Syntax	APPLy {<voltage> MINimum MAXimum}[,{<current> MINimum MAXimum}]	
Query Syntax	APPLy?	
Parameter	<voltage>	<NRf> 0% ~ 105% of the rated output voltage.
	<current>	<NRf> 0% ~ 105% of the rated output current.
	MINimum	0 volts/0 amps
	MAXimum	Maximum value for the present range.
Return parameter	<NR2>	Return value of the voltage.
	<NR2>	Return value of the current.
Example1	<p>APPL 5.05,1.1</p> <p>Sets to 1.1A current to 5.05V voltage.</p>	
Example2	<p>APPL 3.5</p> <p>Sets to 3.5V voltage only.</p>	
Query example	<p>APPL?</p> <p>>+5.050, +1.100</p> <p>Returns a value of setting current (1.1A) and voltage(5.05V) .</p>	

4.4 Display Commands



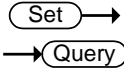
4.4.1 DISPlay:MENU[:NAME]

Description	The DISPlay MENU command selects a screen menu or queries the current screen menu.	
Syntax	DISPlay:MENU[:NAME] <NR1>	
Query Syntax	DISPlay:MENU[:NAME]?	
Parameter	0	Measurement-Voltage / Current
	1	Measurement-Voltage / Power
	2	Measurement-Power / Current
	3	Set Menu(Voltage/Current)
	4	OVP / OCP Menu
	5~99	Not Used.
	100~199	F-00~99 Menu.
Example	DISP:MENU 0 Sets the display to the Voltage/Current display screen.	
Query example	DISP:MENU? >0 Return the code of the display state. (0= Measurement-Voltage / Current)	

4.4.2 DISPlay[:WINDow]:TEXT:CLEar



Description	Clears the text on the main screen.	
Syntax	DISPlay[:WINDow]:TEXT:CLEar	
Example	DISP:TEXT:CLE Clears the text on the main screen.	



4.4.3 DISPlay[:WINDow]:TEXT[:DATA]

Description	Sets or queries the data text that will be written to the display. Writing to the display will overwrite data that is currently on the screen. Overwriting a display area with a shorter string may or may not overwrite the screen. The string must be enclosed in quotes: "STRING". Only ASCII characters 20H to 7EH can be used in the <string>.	
Syntax	DISPlay[:WINDow]:TEXT[:DATA] "<string>"	
Query Syntax	DISPlay[:WINDow]:TEXT[:DATA]?	
Parameter	"<string>"	Sets the eight characters of 20H ~ 7EH of ASCII characters. Must be enclosed in quotation marks ("") string.
Return parameter	"<string>"	Return a text string enclosed in quotation marks ("").
Example	DISP:TEXT "ABCD" Sets the screen the text data of "ABCD".	
Query example	DISP:TEXT? >"ABCD" Return a string of text data displayed.	

Set →
 → Query

4.4.4 DISPlay:BLINK

Description	Turns blink on or off for the display.	
Syntax	DISPlay:BLINK { <Boolean> OFF ON }	
Query Syntax	DISPlay:BLINK?	
Parameter	0 / OFF	Turns blink OFF
	1 / ON	Turns blink ON
Return parameter	<Boolean>	Return the status of the blink display.
Example	DISP:BLIN 1	
	Turns blink ON.	
Query example	DISP:BLIN?	
	>0	Return the status of the blink display.

4.5 Initiate Commands

4.5.1 INITiate[:IMMEDIATE]:NAME

Set →

Description	The INITiate command starts the TRANSient or OUTPut trigger.	
Syntax	INITiate[:IMMEDIATE]:NAME {TRANSient OUTPut}	
Parameter	TRANSient	Starts the TRANSient trigger.
	OUTPut	Starts the OUTPut trigger.
Example	INIT:NAME TRAN	
	Starts the Transient trigger.	

4.6 Measure Commands

4.6.1 MEASure[:SCALar]:CURRent[:DC]

→ Query

Description	Takes a measurement and returns the average output current.
Query Syntax	MEASure[:SCALar]:CURRent[:DC]?
Return parameter	<NR2> Returns the current in amps.
Query example	MEAS:CURR? >+1.000 Return the average output current.

4.6.2 MEASure[:SCALar]:VOLTage[:DC]

→ Query

Description	Takes a measurement and returns the average output voltage.
Query Syntax	MEASure[:SCALar]:VOLTage[:DC]?
Return parameter	<NR2> Returns the voltage in volts.
Query example	MEAS:VOLT? >+5.000 Return the average output voltage.

4.6.3 MEASure[:SCALar]:POWER[:DC]

→ Query

Description	Takes a measurement and returns the average output power.
Query Syntax	MEASure[:SCALar]:POWER[:DC]?
Return parameter	<NR2> Returns the power measured in watts.
Query example	MEAS:POW? >+10 Return the average output power.

4.7 Output Commands

Set →

4.7.1 OUTPut:DELAy:ON

→ Query

Description	Sets the Delay Time in seconds for turning the output on. The delay is set to 0.00 by default.
Syntax	OUTPut:DELAy:ON <NRf>
Query Syntax	OUTPut:DELAy:ON?
Parameter	<NRf> 0.00~99.99 seconds, where 0=no delay.
Return parameter	<NR2> Returns the delay on time in seconds until the output is turned on.
Example	OUTP:DEL:ON 1 Sets 1 second to the Delay Time for turning the output on.
Query example	OUTP:DEL:ON? >+10.000 Returns the delay on time in seconds until the output is turned on.



Set →

4.7.2 OUTPut:DELAy:OFF

→ Query

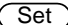

Description	Sets the Delay Time in seconds for turning the output off. The delay is set to 0.00 by default.
-------------	---

Syntax	OUTPut:DElAY:OFF <NRf>
Query Syntax	OUTPut:DElAY:OFF?
Parameter	<NRf> 0.00~99.99 seconds, where 0=no delay.
Return parameter	<NR2> Returns the delay on time in seconds until the output is turned off.
Example	OUTP:DEL:OFF 1 Sets 1 second to the Delay Time for turning the output off.
Query example	OUTP:DEL:OFF? >+10.000 Returns the delay on time in seconds until the output is turned off.

 →
 → 



4.7.3 OUTPut:MODE

Description	Sets the PSW output mode. This is the equivalent to the F-03 (V-I Mode Slew Rate Select) settings.
Syntax	OUTPut:MODE {<NR1> CVHS CCHS CVLS CCLS}
Query Syntax	OUTPut:MODE?
Parameter	0 / CVHS CV high speed priority 1 / CCHS CC high speed priority 2 / CVLS CV slew rate priority 3 / CCLS CCV slew rate priority
Return parameter	<NR1> Returns the output mode.
Example	OUTP:MODE CVHS Sets the output mode.
Query example	OUTP:MODE? >0 Returns the output mode.

 →
 → 

4.7.4 OUTPut[:STATe][:IMMediate]

Description	Turns the output on or off.
Syntax	OUTPut[:STATe][:IMMediate] { <Boolean> OFF ON }
Query Syntax	OUTPut[:STATe][:IMMediate]?
Parameter	0 / OFF Turns the output off. 1 / ON Turns the output on.
Return parameter	<NR1> Returns output status of the instrument.
Example	OUTP ON Sets output status of the instrument.
Query example	OUTP? >1 Returns output status of the instrument.

 →
 → 

4.7.5 OUTPut[:STATe]:TRIGgered

Description	Turns the output on or off when a software trigger is generated.
Syntax	OUTPut[:STATe]:TRIGgered { <Boolean> OFF ON }
Query Syntax	OUTPut[:STATe]:TRIGgered?
Parameter	0 / OFF Turns the output off when a software trigger is generated.

	1 / ON	Turns the output on when a software trigger is generated.
Return parameter	<NR1>	Returns output trigger status of the instrument.
Example	OUTP:TRIG ON	Sets output trigger status of the instrument.
Query example	OUTP:TRIG? >1	Returns output trigger status of the instrument.

4.7.6 OUTPut:PROTection:CLEar

Set →

Description	Clears over-voltage, over-current and over-temperature (OVP, OCP, OTP) protection circuits. It also clears the shutdown protection circuit. The AC failure protection cannot be cleared.
Syntax	OUTPut:PROTection:CLEar
Example	OUTP:PROT:CLE Clears the protection circuit.

4.7.7 OUTPut:PROTection:TRIPped

→ Query

Description	Returns the state of the protection circuits (OVP, OCP, OTP).
Query Syntax	OUTPut:PROTection:TRIPped?
Return parameter	0 Protection circuits are not tripped. 1 Protection circuits are tripped.
Query example	OUTP:PROT:TRIP? >0 Return the state of protection circuit.

4.8 Sense Commands

Set →

4.8.1 SENSE:AVERAge:COUNT

→ Query

Description	Determines the level of smoothing for the average setting. This is the equivalent to the F-17 function setting.
Syntax	SENSE:AVERAge:COUNT {<NR1> LOW MIDDLE HIGH}
Query Syntax	SENSE:AVERAge:COUNT?
Parameter	0 / LOW Low level of smoothing. 1 / MIDDLE Middle level of smoothing. 2 / HIGH High level of smoothing.
Return parameter	<NR1> Returns the level of smoothing. 0 Low level of smoothing. 1 Middle level of smoothing. 2 High level of smoothing.
Example	SENSE:AVERAge:COUNT 1 Sets the level of smoothing to middle.
Query example	SENS:AVER:COUN? >0 Return the state of smoothing for the average setting.

4.9 Status Commands

4.9.1 STATus:OPERation[:EVENT]

→ Query

Description	Queries the Operation Status Event register and clears the contents of the register.
-------------	--

Query Syntax	STATus:OPERation[:EVENT]?
Return parameter	<NR1> Returns the bit sum of the Operation Status Event register.
Query example	STAT:OPER? >0 Return the value of the Operation Status Event register.

4.9.2 STATus:OPERation:CONDITION

→ Query

Description	Queries the Operation Condition register. This query will not clear the register.
Query Syntax	STATus:OPERation:CONDition?
Return parameter	<NR1> Returns the bit sum of the Operation Condition register.
Query example	STAT:OPER:COND? >0 Return the value of the Operation Condition register.

Set →

4.9.3 STATus:OPERation:ENABLE

→ Query

Description	Sets or queries the bit sum of the Operation Status Enable register.
Syntax	STATus:OPERation:ENABLE <NRf>
Query Syntax	STATus:OPERation:ENABLE?
Parameter	<NR1> 0~32767
Example	STAT:OPER:ENAB 1 Sets the Operation Status Enable register.
Query example	STAT:OPER:ENAB? >1 Return the value of the Operation Status Enable register.

Set →

4.9.4 STATus:OPERation:PTRansition

→ Query

Description	Sets or queries the bit sum of the positive transition filter of the Operation Status register.
Syntax	STATus:OPERation:PTRansition <NRf>
Query Syntax	STATus:OPERation:PTRansition?
Parameter	<NR1> 0~32767
Example	STAT:OPER:PTR 1 Sets the positive transition filter of the Operation Status register.
Query example	STAT:OPER:PTR? >1 Return the value of the positive transition filter of the Operation Status register.

Set →

4.9.5 STATus:OPERation:NTRansition

→ Query

Description	Sets or queries the bit sum of the negative transition filter of the Operation Status register.
Syntax	STATus:OPERation:NTRansition <NRf>
Query Syntax	STATus:OPERation:NTRansition?

Parameter	<NR1> 0~32767
Example	STAT:OPER:NTR 1 Sets the negative transition filter of the Operation Status register.
Query example	STAT:OPER:NTR? >1 Return the value of the negative transition filter of the Operation Status register.

4.9.6 STATus:QUEStionable[:EVENT]

→ Query

Description	Queries the bit sum of the Questionable Status Event register. This query will also clear the contents of the register.
Query Syntax	STATus:QUEStionable[:EVENT]?
Return parameter	<NR1> Returns the bit sum of the Questionable Status Event register.
Query example	STAT:QUES? >0 Return the value of the Questionable Status Event register.

4.9.7 STATus:QUEStionable:CONDition

→ Query

Description	Queries the Questionable Condition register. This query will not clear the register.
Query Syntax	STATus:QUEStionable:CONDition?
Return parameter	<NR1> Returns the bit sum of the Questionable Condition register.
Query example	STAT:QUES:COND? >0 Return the value of the Questionable Condition register.

Set →

4.9.8 STATus:QUEStionable:ENABLE

→ Query

Description	Sets or queries the bit sum of the Questionable Status Enable register.
Syntax	STATus:QUEStionable:ENABLE <NRf>
Query Syntax	STATus:QUEStionable:ENABLE?
Parameter	<NR1> 0~32767
Example	STAT:QUES:ENAB 1 Sets the Questionable Status Enable register.
Query example	STAT:QUES:ENAB? >1 Return the value of the Questionable Status Enable register.

Set →

4.9.9 STATus:QUEStionable:PTRansition

→ Query

Description	Sets or queries the bit sum of the positive transition filter of the Questionable Status register.
Syntax	STATus:QUEStionable:PTRansition <NRf>
Query Syntax	STATus:QUEStionable:PTRansition?
Parameter	<NR1> 0~32767

Example	STAT:QUES:PTR 1 Sets the positive transition filter of the Questionable Status register.
Query example	STATQUES:PTR? >1 Return the value of the positive transition filter of the Questionable Status register.

Set →
 → Query

4.9.10 STATus:QUESTionable:NTRansition

Description	Sets or queries the bit sum of the negative transition filter of the Questionable Status register.
Syntax	STATus:QUESTionable:NTRansition <NRf>
Query Syntax	STATus:QUESTionable:NTRansition?
Parameter	<NR1> 0-32767
Example	STAT:QUES:NTR 1 Sets the negative transition filter of the Questionable Status register.
Query example	STAT:QUES:NTR? >1 Return the value of the negative transition filter of the Questionable Status register.

4.9.11 STATus:PRESet

Set →

Description	<p>This command resets the ENABLE register, the PTRansition filter and NTRansition filter on the Operation Status and Questionable Status Registers. The registers/filters will be reset to a default value.</p> <table border="1" style="width: 100%; border-collapse: collapse;"> <thead> <tr> <th style="text-align: left;">Default Register/Filter Values</th> <th style="text-align: left;">Setting</th> </tr> </thead> <tbody> <tr> <td>QUESTionable Status Enable</td> <td>0x0000</td> </tr> <tr> <td>QUESTionable Status Positive Transition</td> <td>0x7FFF</td> </tr> <tr> <td>QUESTionable Status Negative Transition</td> <td>0x0000</td> </tr> <tr> <td>Operation Status Enable</td> <td>0x0000</td> </tr> <tr> <td>Operation Status Positive Transition</td> <td>0x7FFF</td> </tr> <tr> <td>Operation Status Negative Transition</td> <td>0x0000</td> </tr> </tbody> </table> <p>Summary: The Questionable Status Enable registers and the Operation Status Enable registers are both reset to 0. The Questionable Status and Operation Status Positive Transition filters are all set high (0x7FFF) and the Negative Transition filters are all set low (0x0000). I.e., only positive transitions will be recognized for the Questionable Status and Operation Status registers.</p>	Default Register/Filter Values	Setting	QUESTionable Status Enable	0x0000	QUESTionable Status Positive Transition	0x7FFF	QUESTionable Status Negative Transition	0x0000	Operation Status Enable	0x0000	Operation Status Positive Transition	0x7FFF	Operation Status Negative Transition	0x0000
Default Register/Filter Values	Setting														
QUESTionable Status Enable	0x0000														
QUESTionable Status Positive Transition	0x7FFF														
QUESTionable Status Negative Transition	0x0000														
Operation Status Enable	0x0000														
Operation Status Positive Transition	0x7FFF														
Operation Status Negative Transition	0x0000														
Syntax	STATus:PRESet														
Example	STAT:PRES Sets the initial value to Questionable status and Operation status.														

4.10 Source Commands

Set →
 → Query

4.10.1 [SOURce]:CURRent[:LEVel][:IMMediate][:AMPLitude]

Description	Sets or queries the current level in amps. For externally set current levels (from the analog control connector) the set current level is returned.	
Syntax	[SOURce:]CURRent[:LEVel][:IMMediate][:AMPLitude] {<NRf> MINimum MAXimum}	
Query Syntax	[SOURce:]CURRent[:LEVel][:IMMediate][:AMPLitude]? [MINimum MAXimum]	
Parameter	<NRf> MINimum MAXimum	0%~105% of the rated current output level. Minimum current level. Maximum current level.
Return parameter	<NR2>	Return the level of the output current.
Example	CURR 5 Sets the output current level.	
Query example1	CURR? >+5.120 Return the setting level of the output current.	
Query example2	CURR? MAX >+37.800 Return the maximum setting level of the output current.	

(Set) →

4.10.2 [SOURce:]CURRent[:LEVel]:TRIGgered[:AMPLitude]

→ (Query)

Description	Sets or queries the current level in amps when a software trigger has been generated.	
Syntax	[SOURce:]CURRent[:LEVel]:TRIGgered[:AMPLitude] {<NRf> MINimum MAXimum}	
Query Syntax	[SOURce:]CURRent[:LEVel]:TRIGgered[:AMPLitude]? [MINimum MAXimum]	
Parameter	<NRf> MINimum MAXimum	0%~105% of the rated current output in amps. Minimum current level. Maximum current level.
Return parameter	<NR2>	Return the level of the output current of software trigger.
Example	CURR:TRIG 15 Sets the output current level of software trigger.	
Query example1	CURR:TRIG? >+15.000 Return the setting level of the output current of software trigger.	
Query example2	CURR:TRIG? MAX >+37.800 Return the maximum setting level of the output current of software trigger.	

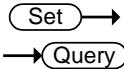
(Set) →

4.10.3 [SOURce:]CURRent:PROTection[:LEVel]

→ (Query)

Description	Sets or queries the OCP (over-current protection) level in amps.	
Syntax	[SOURce:]CURRent:PROTection[:LEVel] {<NRf> MINimum MAXimum}	
Query Syntax	[SOURce:]CURRent:PROTection[:LEVel]? [MINimum MAXimum]	
Parameter	<NRf> MINimum	10%~110% of the rated current output level. Minimum OCP level.

	MAXimum	Maximum OCP level.
Return parameter	<NR2>	Returns the OCP level.
Example	CURR:PROT 5	Sets the OCP level.
Query example1	CURR:PROT? >+5.000	Returns the setting value of the OCP level.
Query example2	CURR:PROT? MIN >+3.600	Returns the minimum possible OCP level in amps.



4.10.4 [SOURce:]CURRent:PROTection:STATe

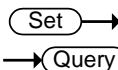
Description	Turns OCP (over-current protection)function to on or off.	
Syntax	[SOURce:]CURRent:PROTection:STATe {0 1 OFF ON}	
Query Syntax	[SOURce:]CURRent:PROTection:STATe?	
Parameter	0 / OFF	Turns off the OCP function.
	1 / ON	Turns on the OCP function and set OCP value to Maximum.
Return parameter	<Boolean>	Return the state(0 or 1) of the OCP function.
Example	CURR:PROT:STAT ON	Sets the OCP function.
Query example	CURR:PROT:STAT? >1	Return the setting of the OCP function.

Set →

→ Query

4.10.5 [SOURce:]CURRent:SLEW:RISing

Description	Sets or queries the rising current slew rate. This is only applicable for CC slew rate priority mode.	
Syntax	[SOURce:]CURRent:SLEW:RISing {<NRf> MINimum MAXimum}	
Query Syntax	[SOURce:]CURRent:SLEW:RISing? [MINimum MAXimum]	
Parameter	<NRf>	0.01A/s~72.00A/s (PSW-360L30) 0.1A/s~144.0A/s (PSW-720L30) 0.1A/s~216.0A/s (PSW-1080L30) 0.01A/s~27.00A/s (PSW-360L80) 0.01A/s~54.00A/s (PSW-720L80) 0.01A/s~81.00A/s (PSW-1080L80) 0.01A/s~14.40A/s (PSW-360M160) 0.01A/s~28.80A/s (PSW-720M160) 0.01A/s~43.20A/s (PSW-1080M160) 0.001A/s ~ 9.000A/s (PSW-360M250) 0.01A/s ~ 18.00A/s (PSW-720M250) 0.01A/s ~ 27.00A/s (PSW-1080M250) 0.001A/s ~ 2.880A/s (PSW-360H800) 0.001A/s ~ 5.760A/s (PSW-720H800) 0.001A/s ~ 8.640A/s (PSW-1080H800)
	MINimum	Minimum rising current slew rate.
	MAXimum	Maximum rising current slew rate.
Return parameter	<NR2>	Return the value of the rising current slew rate.
Example	CURR:SLEW:RIS 72 Sets the rising current slew rate of 72A/s.	
Query example1	CURR:SLEW:RIS? >+5.000 Return the setting value of the rising current slew rate.	
Query example2	CURR:SLEW:RIS? MAX >+72.000 Return the maximum setting value of the rising current slew rate.	



4.10.6 [SOURce:]CURRent:SLEW:FALLing

Description	Sets or queries the falling current slew rate. This is only applicable for CC slew rate priority mode.	
Syntax	[SOURce:]CURRent:SLEW:FALLing {<NRf> MINimum MAXimum}	
Query Syntax	[SOURce:]CURRent:SLEW:FALLing? [MINimum MAXimum]	
Parameter	NRf	0.01A/s~72.00A/s (PSW-360L30) 0.1A/s~144.0A/s (PSW-720L30) 0.1A/s~216.0A/s (PSW-1080L30) 0.01A/s~27.00A/s (PSW-360L80) 0.01A/s~54.00A/s (PSW-720L80) 0.01A/s~81.00A/s (PSW-1080L80) 0.01A/s~14.40A/s (PSW-360M160) 0.01A/s~28.80A/s (PSW-720M160) 0.01A/s~43.20A/s (PSW-1080M160) 0.001A/s ~ 9.000A/s (PSW-360M250) 0.01A/s ~ 18.00A/s (PSW-720M250) 0.01A/s ~ 27.00A/s (PSW-1080M250) 0.001A/s ~ 2.880A/s (PSW-360H800) 0.001A/s ~ 5.760A/s (PSW-720H800) 0.001A/s ~ 8.640A/s (PSW-1080H800)
	MINimum	Minimum falling current slew rate.
	MAXimum	Maximum falling current slew rate.
Return parameter	<NR2>	Return the value of the falling current slew rate.
Example	CURR:SLEW:FALL 1 Sets the falling current slew rate of 1A/s.	
Query example1	CURR:SLEW:FALL? >+5.000 Return the setting value of the falling current slew rate.	
Query example2	CURR:SLEW:FALL? MAX >+72.000 Return the maximum setting value of the falling current slew rate.	

Set →

4.10.7 [SOURce:]RESistance[:LEVel][:IMMEDIATE][:AMPLitude]

→ Query

Description	Sets or queries the internal resistance in ohms.	
Syntax	[SOURce:]RESistance[:LEVel][:IMMEDIATE][:AMPLitude] {<NRf> MINimum MAXimum?}	
Query Syntax	[SOURce:]RESistance[:LEVel][:IMMEDIATE][:AMPLitude]? [MINimum MAXimum]	
Parameter	<NRf>	Resistance in ohms: 0.000Ω~0.833Ω (PSW-360L30) 0.000Ω~0.417Ω (PSW-720L30) 0.000Ω~0.278Ω (PSW-1080L30) 0.000Ω~5.926Ω (PSW-360L80) 0.000Ω~2.963Ω (PSW-720L80) 0.000Ω~1.975Ω (PSW-1080L80) 0.000Ω~22.222Ω (PSW-360M160) 0.000Ω~11.111Ω (PSW-720M160) 0.000Ω~7.407Ω (PSW-1080M160) 0.00Ω ~ 55.55Ω (PSW-360M250) 0.00Ω ~ 27.77Ω (PSW-720M250) 0.00Ω ~ 18.51Ω (PSW-1080M250) 0.0Ω ~ 555.5Ω (PSW-360H800) 0.0Ω ~ 277.8Ω (PSW-720H800) 0.0Ω ~ 185.1Ω (PSW-1080H800)
	MINimum	Minimum internal resistance in ohms
	MAXimum	Maximum internal resistance in ohms
Return parameter	<NR2>	Return the setting value of the internal resistance.
Example	RES 0.1	Sets the internal resistance to 100mΩ.
Query example1	RES? >+0.100	Return the setting value of the internal resistance.
Query example2	RES? MAX >+0.278	Return the maximum setting value of the internal resistance.

Set →

→ Query

4.10.8 [SOURce:]VOLTage[:LEVel][:IMMediate][:AMPLitude]

Description	Sets or queries the voltage level in volts.	
Syntax	[SOURce:]VOLTage[:LEVel][:IMMediate][:AMPLitude] {<NRf> MINimum MAXimum}	
Query Syntax	[SOURce:]VOLTage[:LEVel][:IMMediate][:AMPLitude]? [MINimum MAXimum]	
Parameter	<NRf> MINimum MAXimum	0%~105% of the rated voltage output level. Minimum voltage level. Maximum voltage level.
Return parameter	<NR2>	Return the level of the output voltage.
Example	VOLT 10 Sets the output voltage level.	
Query example1	VOLT? >+10.000 Return the setting level of the output voltage.	
Query example2	VOLT? MAX >+31.500 Return the maximum setting level of the output voltage.	

Set →

→ Query

4.10.9 [SOURce:]VOLTage[:LEVel]:TRIGgered[:AMPLitude]

Description	Sets or queries the voltage level in volts when a software trigger has been generated.	
Syntax	[SOURce:]VOLTage[:LEVel]:TRIGgered[:AMPLitude] {<NRf> MINimum MAXimum}	
Query Syntax	[SOURce:]VOLTage[:LEVel]:TRIGgered[:AMPLitude]? [MINimum MAXimum]	
Parameter	<NRf> MINimum MAXimum	0%~105% of the rated voltage output in volts. Minimum voltage level. Maximum voltage level.
Return parameter	<NR2>	Return the level of the output voltage of software trigger.
Example	VOLT:TRIG 10 Sets the output voltage level of software trigger.	
Query example1	VOLT:TRIG? >+10.000 Return the setting level of the output voltage of software trigger.	
Query example2	VOLT:TRIG? MAX >+31.500 Return the maximum setting level of the output voltage of software trigger.	

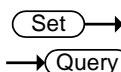
Set →

→ Query

4.10.10 [SOURce:]VOLTage:PROTection[:LEVel]

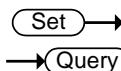
Description	Sets or queries the OVP (over-voltage protection) level.	
Syntax	[SOURce:]VOLTage:PROTection[:LEVel] {<NRf> MINimum MAXimum}	

Query Syntax	[SOURce:]VOLTage:PROTection[:LEVel]? [MINimum MAXimum]
Parameter	<NRf> 10%~110% of the rated output voltage in volts. MINimum Minimum OVP level. MAXimum Maximum OVP level.
Return parameter	<NR2> Returns the OVP level.
Example	VOLT:PROT MAXimum Sets the maximum OVP level.
Query example1	VOLT:PROT? >+10.000 Returns the setting value of the OVP level.
Query example2	VOLT:PROT? MAX OVP >+33.000 Returns the maximum possible OVP level in volts.



4.10.11 [SOURce:]VOLTage:SLEW:RISing

Description	Sets or queries the rising voltage slew rate. This is only applicable for CV slew rate priority mode.
Syntax	[SOURce:]VOLTage:SLEW:RISing {<NRf> MINimum MAXimum}
Query Syntax	[SOURce:]VOLTage:SLEW:RISing? [MINimum MAXimum]
Parameter	<NRf> 0.01V/s~60.00V/s (PSW-XXL30) 0.1V/s~160.0V/s (PSW-XXL80) 0.1V/s~320.0V/s (PSW-XXM160) 0.1V/s~500.0V/s (PSW-XXM250) 1V/s ~1600V/s (PSW-XXH800) MINimum Minimum rising voltage slew rate. MAXimum Maximum rising voltage slew rate.
Return parameter	<NR2> Return the value of rising slew rate of voltage.
Example	VOLT:SLEW:RIS MAX Sets the rising voltage slew rate to its maximum.
Query example1	VOLT:SLEW:RIS? >+10.000 Return the setting value of the rising voltage slew rate.
Query example2	VOLT:SLEW:RIS? MAX >+33.000 Return the rising voltage slew rate to its maximum.

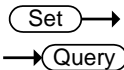


4.10.12 [SOURce:]VOLTage:SLEW:FALLing

Description	Sets or queries the falling voltage slew rate. This is only applicable for CV slew rate priority mode.
Syntax	[SOURce:]VOLTage:SLEW:FALLing {<NRf> MINimum MAXimum}
Query Syntax	[SOURce:]VOLTage:SLEW:FALLing? [MINimum MAXimum]
Parameter	<NRf> 0.01V/s~60.00V/s (PSW-XXL30) 0.1V/s~160.0V/s (PSW-XXL80) 0.1V/s~320.0V/s (PSW-XXM160) 0.1V/s~500.0V/s (PSW-XXM250) 1V/s ~1600V/s (PSW-XXH800) MINimum Minimum falling voltage slew rate.

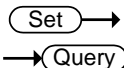
	MAXimum	Maximum falling voltage slew rate.
Return parameter	<NR2>	Return the value of falling slew rate of voltage.
Example	VOLT:SLEW:FALL MIN	Sets the falling voltage slew rate to its minimum.
Query example1	VOLT:SLEW:FALL? >+10.000	Return the setting value of the falling voltage slew rate.
Query example2	VOLT:SLEW:FALL? MIN >+0.01	Return the falling voltage slew rate to its maximum.

4.11 System control setting Commands



4.11.1 SYSTem:BEEPer[:IMMediate]

Description	This command causes an audible tone to be generated by the instrument. The duration time is specified in seconds.	
Syntax	SYSTem:BEEPer[:IMMediate] {<NR1> MINimum MAXimum}	
Query Syntax	SYSTem:BEEPer[:IMMediate]? [MINimum MAXimum]	
Parameter	<NR1>	0 ~ 3600 seconds.
	MINimum	Sets the beeper time to the minimum (0 seconds)
	MAXimum	Sets the beeper time to the maximum (3600 seconds)
Return parameter	<NR1>	Returns the remaining beeper duration time in seconds or returns the maximum or minimum beeper time in seconds (for the [MINimum MAXimum] query parameters).
Example1	SYST:BEEP 10 after a 2 second wait SYST:BEEP? >8 The first command turns the beeper on for 10 seconds. After 2 seconds the SYST:BEEP? query returns the remaining beeper time (8 seconds).	
Example2	SYST:BEEP? MAX >3600 Returns the maximum settable beeper time in seconds.	



4.11.2 SYSTem:CONFigure:BEEPer[:STATe]

Description	Sets or queries the buzzer state on/off.	
Syntax	SYSTem:CONFigure:BEEPer[:STATe] {<Boolean> OFF ON }	
Query Syntax	SYSTem:CONFigure:BEEPer[:STATe]?	
Parameter	0 / OFF	Turns the buzzer off.
	1 / ON	Turns the buzzer on.
Return parameter	<Boolean>	Return the setting value of the buzzer by 0 or 1.

Example	SYST:CONF:BEEP ON Sets to turn on the buzzer.
Query example	SYST:CONF:BEEP? >1 Return the setting of buzzer.

Set →

→ Query

4.11.3 SYSTem:CONFigure:BLEeder[:STATe]

Description	Sets or queries the status of the bleeder resistor.
Syntax	SYSTem:CONFigure:BLEeder[:STATe] {<NR1> OFF ON AUTO}
Query Syntax	SYSTem:CONFigure:BLEeder[:STATe]?
Parameter	0 / OFF Turns the bleeder resistor off. 1 / ON Turns the bleeder resistor on. 2 / AUTO Turns the AUTO mode on.
Return parameter	<NR1> Return the setting value of the bleeder resistor.
Example	SYST:CONF:BLE ON Sets to turn on the bleeder resistor.
Query example	SYST:CONF:BLE? >1 Return the setting of the bleeder resistor.

4.11.4 SYSTem:CONFigure:BTRip[:IMMEDIATE]

Set →

Description	Trips the power switch trip (circuit breaker) to turn the unit off (shut down the power).
Syntax	SYSTem:CONFigure:BTRip[:IMMEDIATE]
Example	SYST:CONF:BTR Turn off the breaker of the power switch.

Set →

4.11.5 SYSTem:CONFigure:BTRip:PROTECTION

→ Query

Description	Enables/Disables the power switch trip (circuit breaker) when the OVP or OCP protection settings are tripped. This setting only applies after power has been reset.
Syntax	SYSTem:CONFigure:BTRip:PROTECTION {<Boolean> OFF ON }
Query Syntax	SYSTem:CONFigure:BTRip:PROTECTION?
Parameter	0 / OFF Sets to disable the power switch circuit breaker of OCP or OVP. 1 / ON Sets to enable the power switch circuit breaker of OCP or OVP.
Return parameter	<Boolean> Return the setting value of the power switch circuit breaker by 0 or 1.
Example	SYST:CONF:BTR:PROT ON Sets to enable the protection function of the power switch circuit breaker.
Query example	SYST:CONF:BTR:PROT? >1 Return the value of the protection function of circuit breaker of the power switch.

Set →
 → Query

4.11.6 SYSTem:CONFigure:CURRent:CONTRol

Description	Sets or queries the CC control mode (local control (panel), external voltage control, external resistance control). This setting is applied only after the unit is reset.	
Syntax	SYSTem:CONFigure:CURRent:CONTRol {0 1 2 3}	
Query Syntax	SYSTem:CONFigure:CURRent:CONTRol?	
Parameter	0	Local (Panel) control
	1	External voltage control
	2	External resistance control; 10kΩ = Io max, 0kΩ = Io min.
	3	External resistance control; 10kΩ = Io min, 0kΩ = Io max.
Example	SYST:CONF:CURR:CONT 0 Sets the setting state of the CC control mode.	
Query example	SYST:CONF:CURR:CONT? >0 Return the setting state of the CC control mode.	

Set →
 → Query

4.11.7 SYSTem:CONFigure:VOLTAge:CONTRol

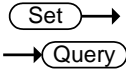
Description	Sets or queries the CV control mode (local control, external voltage control, external resistance control). This setting is applied only after the unit is reset.	
Syntax	SYSTem:CONFigure:VOLTAge:CONTRol {0 1 2 3}	
Query Syntax	SYSTem:CONFigure:VOLTAge:CONTRol?	
Parameter	0	Local (Panel) control
	1	External voltage control
	2	External resistance control; 10kΩ = Vo max, 0kΩ = Vo min.
	3	External resistance control; 10kΩ = Vo min, 0kΩ = Vo max.
Example	SYST:CONF:VOLT:CONT 0 Sets the setting state of the CV control mode.	
Query example	SYST:CONF:VOLT:CONT? >0 Return the setting state of the CV control mode.	

Set →
 → Query

4.11.8 SYSTem:CONFigure:MSLave

Description	Sets or queries the unit operation mode. This setting is only applied after the unit has been reset.	
Syntax	SYSTem:CONFigure:MSLave {0 1 2 3 4}	
Query Syntax	SYSTem:CONFigure:MSLave?	
Note	Series mode is only supported for 30V/80V/160V models.	
Parameter	0	Master / Local
	1	Master / Parallel 1 (2 units)
	2	Master / Parallel 2 (3 units)
	3	Slave / Parallel

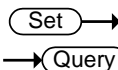
	4	Slave / Series
Example	SYST:CONF:MSL 0 Sets the operation mode.	
Query example	SYST:CONF:MSL? >0 Return the operation mode.	



4.11.9 SYSTem:CONFigure:OUTPut:EXTernal[:MODE]

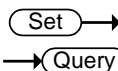
Description	Sets the external logic as active high or active low. This setting is only applied after the unit has been reset.	
Syntax	SYSTem:CONFigure:OUTPut:EXTernal[:MODE]	
Query Syntax	SYSTem:CONFigure:OUTPut:EXTernal[:MODE]?	
Parameter	0 / HIGH	Active high
	1 / LOW	Active low
Return parameter	<Boolean>	Return the setting value of the the mode of the external logic by 0 or 1.
Example	SYST:CONF:OUTP:EXT HIGH Sets the external logic mode.	
Query example	SYST:CONF:OUTP:EXT? >0 Return the external logic mode.	

4.11.10 SYSTem:CONFigure:OUTPut:PON[:STATe]



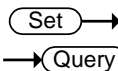
Description	Sets the unit to turn the output ON/OFF at power-up. This setting is only applied after the unit has been reset.	
Syntax	SYSTem:CONFigure:OUTPut:PON[:STATe] {<Boolean> OFF ON }	
Query Syntax	SYSTem:CONFigure:OUTPut:PON[:STATe]?	
Parameter	0 / OFF	Output off at power up
	1 / ON	Output on at power up
Return parameter	<Boolean>	Return the setting value of the power up by 0 or 1.
Example	SYST:CONF:OUTP:PON ON Sets the output state of the power up.	
Query example	SYST:CONF:OUTP:PON? >0 Return the output state setting of the power up.	

4.12 Communication system configuration Commands



4.12.1 SYSTem:COMMunicate:ENABLE

Description	Enables/Disables LAN, GPIB or USB remote interfaces as well as remote services (Sockets, Web Server). This setting is applied only after the unit is reset.	
Syntax	SYSTem:COMMunicate:ENABle <mode>,<interface>	
Query Syntax	SYSTem:COMMunicate:ENABle? <interface>	
Parameter	<mode>	
	0 / OFF	Turns the selected mode off.
	1 / ON	Turns the selected mode on.
	<interface>	
	GPIB	Select GPIB
	USB	Select USB
	LAN	Select LAN
	SOCKets	Select Sockets
	WEB	Select the web server
Return parameter	<Boolean>	Return the setting value of selected the remote interfaces by 0 or 1.
Example	SYST:COMM:ENAB 1,USB Sets of the operation of the USB.	
Query example	SYST:COMM:ENAB? USB >1 Return the setting of the operation of USB.	



4.12.2 SYSTem:COMMunicate:GPIB[:SELF]:ADDRESS

Description	Sets or queries the GPIB address. This setting is applied only after the unit is reset.	
Syntax	SYSTem:COMMunicate:GPIB[:SELF]:ADDRESS <NR1>	

Query Syntax	SYSTem:COMMunicate:GPiB[:SELf]:ADDRes?
Parameter	<NR1> 0-30
Example	SYST:COMM:GPiB:ADDR 15 Sets 15 as the GP-IB address.
Query example	SYST:COMM:GPiB:ADDR? >15 Return the setting value of the GP-IB address.

Set →

→ Query

4.12.3 SYSTem:COMMunicate:LAN:IPADdress

Description	Sets or queries LAN IP address. This setting is applied only after the unit is reset.
Syntax	SYSTem:COMMunicate:LAN:IPADdress <string>
Query Syntax	SYSTem:COMMunicate:LAN:IPADdress?
Parameter	<string> LAN IP address in string format ("address") Applicable ASCII characters: 20H to 7EH.
Return parameter	<string> Return the set value of the IP address of the LAN.
Example	SYST:COMM:LAN:IPAD "172.16.5.111" Sets the IP address of the LAN.
Query example	SYST:COMM:LAN:IPAD? >172.16.5.111 Return the setting value of the IP address of the LAN.

Set →

→ Query

4.12.4 SYSTem:COMMunicate:LAN:GATEway

Description	Sets or queries the Gateway address. This setting is applied only after the unit is reset.
Syntax	SYSTem:COMMunicate:LAN:GATEway <string>
Query Syntax	SYSTem:COMMunicate:LAN:GATEway?
Parameter	<string> LAN Gateway address in string format ("address") Applicable ASCII characters: 20H to 7EH.
Return parameter	<string> Return the set value of the Gateway address of the LAN.
Example	SYST:COMM:LAN:GATE "172.16.0.254" Sets the Gateway address of the LAN.
Query example	SYST:COMM:LAN:GATE? >172.16.0.254 Return the setting value of the Gateway address of the LAN.

Set →

→ Query

4.12.5 SYSTem:COMMunicate:LAN:SMASk

Description	Sets or queries the LAN subnet mask. This setting is applied only after the unit is reset.
Syntax	SYSTem:COMMunicate:LAN:SMASk <string>
Query Syntax	SYSTem:COMMunicate:LAN:SMASk?
Parameter	<string> Subnet mask in string format ("mask") Applicable ASCII characters: 20H to 7EH.
Return parameter	<string> Return the set value of the subnet mask of the LAN.
Example	SYST:COMM:LAN:SMAS "255.255.0.0" Sets the subnet mask of the LAN.

Query example	SYST:COMM:LAN:SMAS? >255.255.0.0 Return the setting value of the subnet mask of the LAN.
---------------	--

4.12.6 SYSTem:COMMunicate:LAN:MAC

→ Query

Description	Returns the unit MAC address as a string. The MAC address cannot be changed.
Query Syntax	SYSTem:COMMunicate:LAN:MAC?
Return parameter	<string> Returns the MAC address in the following format "FF-FF-FF-FF-FF-FF".
Query example	SYST:COMM:LAN:MAC? 02-80-AD-20-31-B1 Returns the MAC address.

Set →

4.12.7 SYSTem:COMMunicate:LAN:DHCP

→ Query

Description	Turns DHCP on/off. Queries the DHCP status. This setting is applied only after the unit is reset.
Syntax	SYSTem:COMMunicate:LAN:DHCP {<Boolean> OFF ON }
Query Syntax	SYSTem:COMMunicate:LAN:DHCP?
Parameter	0 / OFF DHCP off 1 / ON DHCP on
Return parameter	<Boolean> Return the setting of the DHCP by 0 or 1.
Example	SYST:COMM:LAN:DHCP ON DHCP on
Query example	SYST:COMM:LAN:DHCP? >1 Return the setting of the DHCP.

Set →

4.12.8 SYSTem:COMMunicate:LAN:DNS

→ Query

Description	Sets or queries the DNS address. This setting is applied only after the unit is reset.
Syntax	SYSTem:COMMunicate:LAN:DNS <string>
Query Syntax	SYSTem:COMMunicate:LAN:DNS?
Parameter	<string> DNS in string format ("mask") Applicable ASCII characters: 20H to 7EH.
Return parameter	<string> Return the set value of the DNS address of the LAN.
Example	SYST:COMM:LAN:DNS "172.16.1.252" Sets the DNS address of the LAN.
Query example	SYST:COMM:LAN:DNS? >172.16.1.252 Return the setting value of the DNS address of the LAN.

4.12.9 SYSTem:COMMunicate:LAN:HOSTname

→ Query

Description	Queries the host name.
Query Syntax	SYSTem:COMMunicate:LAN:HOSTname?
Return parameter	<string> Host name in string format.

Query example SYST:COMM:LAN:HOST?
 >P-160054
 Returns the host name.

4.12.10 SYSTem:COMMunicate:LAN:WEB:PACTive

Set →
→ Query

Description	Sets or queries whether the web password is on or off. This setting is applied only after the unit is reset.
Syntax	SYSTem:COMMunicate:LAN:WEB:PACTive {<Boolean> OFF ON }
Query Syntax	SYSTem:COMMunicate:LAN:WEB:PACTive?
Parameter	0 / OFF Web password off 1 / ON Web password on
Return parameter	<Boolean> Return the setting state of the Web password by 0 or 1.
Example	SYST:COMM:LAN:WEB:PACT ON Sets the Web password.
Query example	SYST:COMM:LAN:WEB:PACT? >1 Return the setting state of the Web password.

Set →
→ Query

4.12.11 SYSTem:COMMunicate:LAN:WEB:PASSword

Description	Sets or queries the web password. This setting is applied only after the unit is reset.
Syntax	SYSTem:COMMunicate:LAN:WEB:PASSword <NR1>
Query Syntax	SYSTem:COMMunicate:LAN:WEB:PASSword?
Parameter	<NR1> 0 ~ 9999
Example	SYST:COMM:LAN:WEB:PASS 1234 Sets the Web password of 1234.
Query example	SYST:COMM:LAN:WEB:PASS? >1234 Return the setting value of the Web password.

Set →
→ Query

4.12.12 SYSTem:COMMunicate:RLState

Description	Sets or queries the control state of the instrument.
Syntax	SYSTem:COMMunicate:RLState {LOCAL REMote RWLock}
Query Syntax	SYSTem:COMMunicate:RLState ?

Parameter	LOCAL	Sets the instrument to front panel control.
	REMOte	Sets the instrument to remote interface control.
	RWLock	Disables the front panel keys and only allows the instrument to be controlled via the remote interface.
Return parameter	LOC	The instrument is set to front panel control.
	REM	The instrument is set to remote interface control.
	RWL	The front panel keys are disabled. The instrument can only be controlled via the remote interface.

Example SYST:COMM:RLST: LOC
Sets the instrument to front panel control.

4.12.13 SYSTem:COMMunicate:USB:FRONT:STATe → (Query)

Description	Queries the front panel USB-A port state.	
Query Syntax	SYSTem:COMMunicate:USB:FRONT:STATe?	
Return parameter	0	Absent
	1	Mass Storage
Query example	SYST:COMM:USB:FRONT:STAT? >1 Return the status of the USB connection on the front panel.	

4.12.14 SYSTem:COMMunicate:USB:REAR:STATe → (Query)

Description	Queries the rear panel USB-B port state.	
Query Syntax	SYSTem:COMMunicate:USB:REAR:STATe?	
Return parameter	0	Absent
	2	USB-CDC
	3	GPIO-USB (GUG-001)
Query example	SYST:COMM:USB:REAR:STAT? >2 Return the status of the USB connection on the rear panel.	

(Set) →

4.12.15 SYSTem:COMMunicate:USB:REAR:MODE → (Query)

Description	Sets or queries the rear panel USB-B port mode. This command is the equivalent to the F-22 configuration setting.	
Syntax	SYSTem:COMMunicate:USB:REAR:MODE {0 1 2 3}	
Query Syntax	SYSTem:COMMunicate:USB:REAR:MODE?	
Parameter	0	Disable
	1	GPIO-USB adapter
	2	Auto detect speed
	3	Full speed only

Example	SYST:COMM:USB:REAR:MODE 1 Sets the rear panel USB-B port mode to GPIB-USB adapter.
---------	--

4.13 System Settings Commands

4.13.1 SYSTem:ERROr

→ Query

Description	Queries the error queue. The last error message is returned. A maximum of 32 errors are stored in the error queue.
Query Syntax	SYSTem:ERROr?
Return parameter	<NR1> Returns an error code followed by an error message as a string. The string is returned as "string".
Query example	SYST:ERR? >-100, "Command error" Returns the contents of the error message and error code.

Set →

4.13.2 SYSTem:KEYLock:MODE

→ Query

Description	Sets or queries the key lock mode. This setting is the equivalent of the F-19 function setting.
Syntax	SYSTem:KEYLock:MODE {0 1}
Query Syntax	SYSTem:KEYLock:MODE?
Parameter	0 Panel lock: allow output off. 1 Panel lock: allow output on/off.
Example	SYST:KEYL:MODE 0 Sets the key lock mode of allow output off
Query example	SYST:KEYL:MODE? >0 Return the setting state of the key lock mode by 0 or 1.

Set →

4.13.3 SYSTem:KLOCK

→ Query

Description	Enables or disables the front panel key lock.
Syntax	SYSTem:KLOCK { Boolean> OFF ON}
Query Syntax	SYSTem:KLOCK?
Parameter	0 / OFF Panel keys unlocked 1 / ON Panel keys locked
Return parameter	<Boolean> Return the setting state of the key lock of the front panel by 0 or 1.
Example	SYST:KLOC ON Sets the key lock of the front panel.
Query example	SYST:KLOC? >1 Return the setting state of the key lock of the front panel by 0 or 1.

4.13.4 SYSTem:INFormation

→ Query

Description	Queries the system information. Returns the machine version, build date, keyboard CPLD version and analog CPLD version.
-------------	---

Query Syntax	SYSTem:INformation?
Return parameter	<block data> Definite length arbitrary block response data.
Query	SYST:INF?
example	#3238MFRS TEXIO,Model PSW,SN EL160054,Firmware-Version T1.11.20110922,Keyboard-CPLD 0x030C,AnalogControl-CPLD 0x0421,Kernel-Buildon May 22 2011,OSRelease 2.6.28.10,Test-Version 01.00 Aug 1 2011,MAC 02-80-ad-20-31-b1 Returns the system information as a block data.

4.13.5 SYSTem:PRESet



Description	Resets all the settings to the factory default settings. See page 62for details.
Syntax	SYSTem:PRESet
Example	SYST:PRES Sets to the factory setting default settings of all.

4.13.6 SYSTem:VERsion



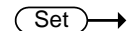
Description	Returns the version of the SCPI specifications that the unit complies with.
Query Syntax	SYSTem:VERsion?
Return parameter	1999.0 Always return the SCPI version of "1999.0".
Query	SYST: VERS
example	>1999.0 Rturn the SCPI version.

4.14 Trigger Commands

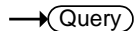
4.14.1 TRIGger:TRANsient[:IMMediate]



Description	Generates a software trigger for the transient trigger system.
Syntax	TRIGger:TRANsient[:IMMediate]
Example	TRIG:TRAN Generates a software trigger for the transient trigger system.



4.14.2 TRIGger:TRANsient:SOURce



Description	Sets or queries the trigger source for the transient system.	
Syntax	TRIGger:TRANsient:SOURce {BUS IMMediate}	
Query Syntax	TRIGger:TRANsient:SOURce?	
Parameter	BUS	Internal software trigger. Waits for the *TRG (or IEEE 488.1 "get" group execute trigger) command to start the trigger.
	IMMediate	Starts the trigger immediately. (default)
Return parameter	<string>	Return in value of the {BUS IMM} the setting the trigger source for the transient system.
Example	TRIG:TRAN:SOUR IMM Sets the trigger source of the transient system.	

Query TRIG:TRAN:SOUR?
 example >IMM
 Return the trigger source of the transient system.

4.14.3 TRIGger:OUTPut[:IMMediate]

Set →

Description Generates a software trigger for the output trigger system.
 Syntax TRIGger:OUTPut[:IMMediate]
 Example TRIG:OUTP
 Generates a software trigger for the output trigger system.

Set →

4.14.4 TRIGger:OUTPut:SOURce

→ Query

Description Sets or queries the trigger source for the output system.
 Syntax TRIGger:OUTPut:SOURce [BUS | IMMediate]
 Query Syntax TRIGger:OUTPut:SOURce?
 Parameter BUS Internal software trigger. Waits for the *TRG (or IEEE 488.1 "get" group execute trigger) command to start the trigger.
 IMMediate Starts the trigger immediately. (default)
 Return parameter <string> Return in value of the {BUS| IMM} the setting the trigger source for the output system.
 Example TRIG:OUTP:SOUR IMM
 Sets the trigger source of the output system.
 Query TRIG:OUTP:SOUR?
 example >IMM
 Return the trigger source of the output system.

4.14.5 Trigger Commands Examples

Example 1 The transient system for the trigger in immediate mode.
 TRIG:TRAN:SOUR IMM
 CURR:TRIG MAX
 VOLT:TRIG 5
 INIT:NAME TRAN -> The current changes to the maximum, and the voltage changes to 5V.

Example 2 The transient system for the trigger in BUS mode.
 TRIG:TRAN:SOUR BUS
 CURR:TRIG MAX
 VOLT:TRIG 5
 INIT:NAME TRAN
 TRIG:TRAN (or *TRG) -> The current changes to the maximum, and the voltage changes to 5V.

5. Status Register Overview

To program the PSW power supply effectively, the Status registers need to be understood. This chapter explains in detail how the Status registers are used and how to configure them.

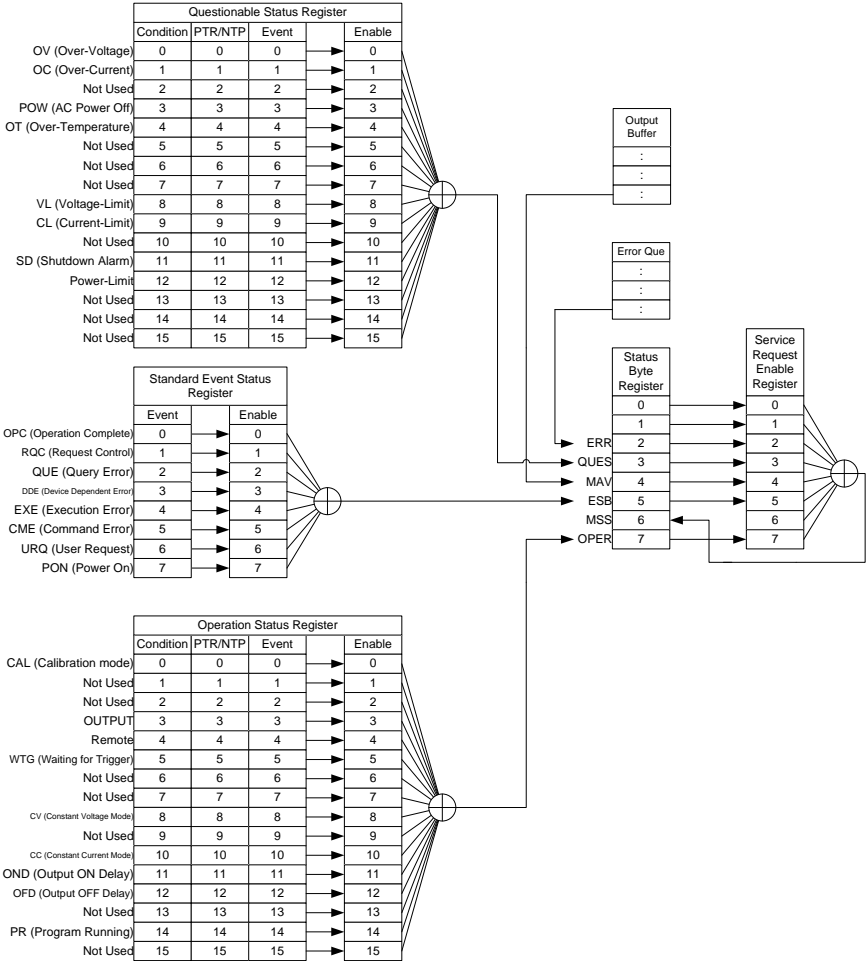
5.1 Introduction to the status register

Overview The status registers are used to determine the status of the power supply. The status registers maintain the status of the protection conditions, operation conditions and instrument errors.

The PSW Series have a number of register groups:

- Questionable Status Register Group
- Operation Status Register Group
- Standard Event Status Register Group
- Status register group

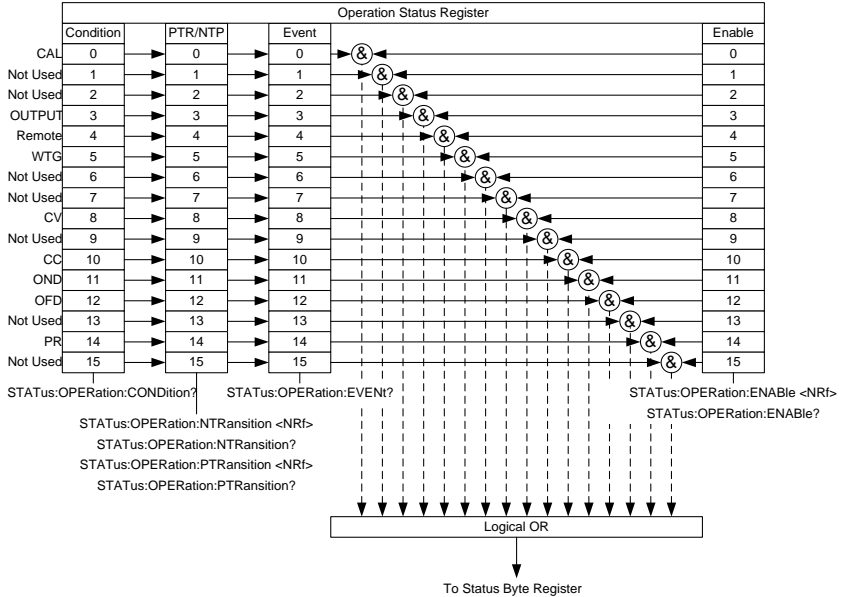
5.2 Configuration status register



PTR/NTR Filters	The PTR/NTR (Positive/Negative transition) register determines the type of transition conditions that will set the corresponding bit in the Event Registers. Use the Positive transition filter to view events that change from false to positive, and use the negative transition filter to view events that change from positive to negative.
Positive Transition	0→1
Negative Transition	1→0
Event Register	The PTR/NTR Register will dictate the type of transition conditions will set the corresponding bits in the Event Register. If the Event Register is read, it will be cleared to 0.
Enable Register	The Enable register determines which Events in the Event Register will be used to set the QUES bit in the Status Byte Register.

5.4 Operation Status Register Group

Overview The Operation Status Register Group indicates the operating status of the power supply.



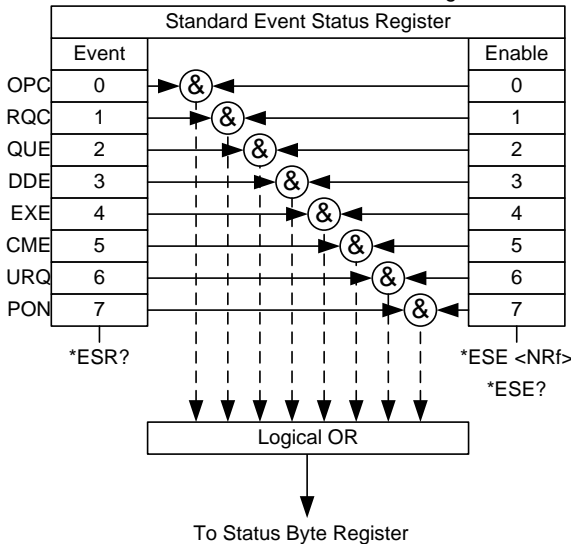
Bit Summary	Bit name	Event	Bit #	Bit Weight
	CAL	CAL (Calibration mode) Indicates if the PSW is in calibration mode.	0	1
	OUTPUT	Indicates if the PSW is in OUTPUT On.	3	8
	Remote	Indicates if the PSW is in Remote.	4	16
	WTG	WTG (Waiting for trigger) Indicates if the PSW is waiting for a trigger.	5	32
	CV	CV (Constant voltage mode) Indicates if the PSW is in CV mode.	8	256
	CC	CC (Constant current mode) Indicates if the PSW is in CC mode.	10	1024
	OND	OND (Output ON Delay) Indicates if Output ON delay time is active	11	2048
	OFD	OFD (Output OFF Delay) Indicates if Output OFF delay time is active	12	4096
	PR	PR (Program Running) Indicates if a Test is running	13	8192

Condition Register The Operation Status Condition Register indicates the operating status of the power supply. If a bit is set in the Condition register, it indicates that the event is true. Reading the condition register does not change the state of the condition register.

PTR/NTR Filters	The PTR/NTR (Positive/Negative transition) register determines the type of transition conditions that will set the corresponding bit in the Event Registers. Use the Positive transition filter to view events that change from false to positive, and use the negative transition filter to view events that change from positive to negative.
	Positive Transition 0→1 Negative Transition 1→0
Event Register	The PTR/NTR Register will dictate the type of transition conditions will set the corresponding bits in the Event Register. If the Event Register is read, it will be cleared to 0.
Enable Register	The Enable register determines which registered Events in the Event Register will be used to set the OPER bit in the Status Byte Register.

5.5 Standard Event Status Register Group

Overview The Standard Event Status Register Group indicates if any errors have occurred. The bits of the Event register are set by the error event queue.



Bit Summary	Bit name	Event	Bit #	Bit Weight
	OPC	OPC (Operation complete) The OCP bit is set when all selected pending operations are complete. This bit is set in response to the *OPC command.	0	1
	RQC	Request control	1	2
	QUE	QUE (Query Error) The Query Error bit is set in response to an error reading the Output Queue. This can be caused by trying to read the Output Queue when there is no data present.	2	4

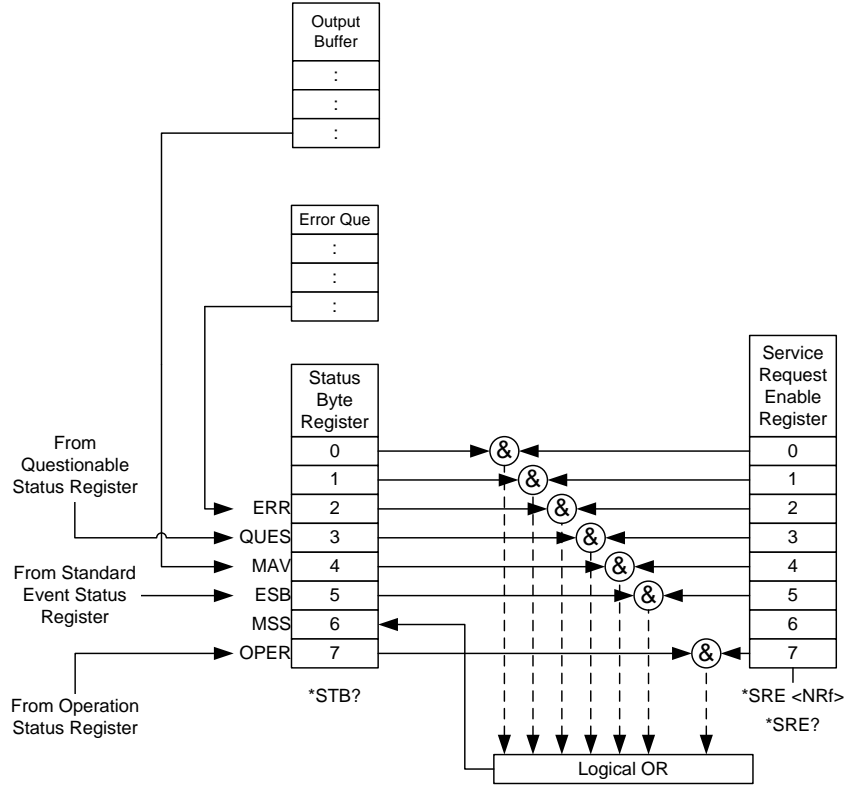
DDE	DDE (Device Dependent Error) Device specific error.	3	8
EXE	EXE (Execution Error) The EXE bit indicates an execution error due to one of the following: illegal command parameter, parameter out of range, invalid parameter, the command didn't execute due to an overriding operation condition.	4	16
CME	CME (Command Error) The CME bit is set when a syntax error has occurred. The CME bit can also be set when a <GET> command is received within a program message.	5	32
URQ	(User Request	6	64
PON	PON (Power On) Indicates the power is turned on.	7	128

Event Register Any bits set in the event register indicate that an error has occurred. Reading the Event register will reset the register to 0.

Enable Register The Enable register determines which Events in the Event Register will be used to set the ESB bit in the Status Byte Register.

5.6 Status register group

Overview The Status Byte register consolidates the status events of all the status registers. The Status Byte register can be read with the *STB? query and can be cleared with the *CLS command.



Bit Summary	Bit name	Event	Bit #	Bit Weight
	ERR	ERR (Error Event/Queue) If data is present in the Error queue, the ERR bit will be set.	2	4
	QUES	QUES (Questionable Status Register) The summary bit for the Questionable Status Register group.	3	8
	MAV	MAV (Message Available) This is set when there is data in the Output Queue waiting to be read.	4	16
	ESB	ESB (Event Summary Bit) The ESB is the summary bit for the Standard Event Status Register group.	5	32
	MSS	The MSS Bit is the summary of the Status Byte Register and Service Request register (bits 1-5, 7). This will be set to 1.	6	64
	OPER	OPER (Operation Status Register) OPER bit is the summary bit for the Operation Status Register Group.	7	128

Status Byte Register Any bits set in the Status byte register acts as a summary register for all the three other status registers and indicates if there is a service request, an error in the Error Queue or data in the Output Queue. Reading the Status Byte register will reset the register to 0.

Service Request Enable Register The Service Request Enable Register controls which bits in the Status Byte Register are able to generate service requests.

5.7 Error code

No.	Description
-100	Command
-102	Syntax error
-103	Invalid separator
-104	Data type
-108	Parameter not allowed
-109	Missing parameter
-111	Header separator error
-112	Program mnemonic too long
-113	Undefined header
-114	Header suffix out of range
-115	Unexpected number of parameters
-120	Numeric data error
-121	Invalid character in number
-128	Numeric data not allowed
-131	Invalid suffix
-141	Invalid character data
-148	Character data not allowed
-151	Invalid string data
-158	String data not allowed
-160	Block data error
-161	Invalid block data
-168	Block data not allowed
-178	Expression data not allowed
-180	Macro error
-200	Execution error
-201	Invalid while in local
-203	Command protected
-211	Trigger ignored
-213	Init ignored
-220	Parameter error
-221	Settings conflict
-222	Data out of range
-224	Illegal parameter value
-310	System error
-320	Storage fault
-400	Query error

6. Appendix

6.1 PSW Default Settings

The following default settings are the factory configuration settings for the power supply(Function settings/Test settings).

Initial Settings		Default Setting
Output		OFF
Key lock		0 (Disabled)
Voltage setting		0 V
Current setting		0 A
OVP		Maximum
OCP		Maximum
Normal Function Settings	Setting	Default Setting
Output ON delay time	F-01	0.00s
Output OFF delay time	F-02	0.00s
V-I mode slew rate select	F-03	0 = CV high speed priority
Rising voltage slew rate	F-04	0.01V/s~60.00V/s (PSW-XXL30) 0.1V/s~160.0V/s (PSW-XXL80) 0.1V/s~320.0V/s (PSW-XXM160) 0.1V/s~500.0V/s (PSW-XXM250) 1V/s ~1600V/s (PSW-XXH800)
Falling voltage slew rate	F-05	0.01V/s~60.00V/s (PSW-XXL30) 0.1V/s~160.0V/s (PSW-XXL80) 0.1V/s~320.0V/s (PSW-XXM160) 0.1V/s~500.0V/s (PSW-XXM250) 1V/s ~1600V/s (PSW-XXH800)
Rising current slew rate	F-06	0.01A/s~72.00A/s (PSW-360L30) 0.1A/s~144.0A/s (PSW-720L30) 0.1A/s~216.0A/s (PSW-1080L30) 0.01A/s~27.00A/s (PSW-360L80) 0.01A/s~54.00A/s (PSW-720L80) 0.01A/s~81.00A/s (PSW-1080L80) 0.01A/s~14.40A/s (PSW-360M160) 0.01A/s~28.80A/s (PSW-720M160) 0.01A/s~43.20A/s (PSW-1080M160) 0.001A/s ~ 9.000A/s (PSW-360M250) 0.01A/s ~ 18.00A/s (PSW-720M250) 0.01A/s ~ 27.00A/s (PSW-1080M250) 0.001A/s ~ 2.880A/s (PSW-360H800) 0.001A/s ~ 5.760A/s (PSW-720H800) 0.001A/s ~ 8.640A/s (PSW-1080H800)

Falling current slew rate	F-07	0.01A/s~72.00A/s (PSW-360L30) 0.1A/s~144.0A/s (PSW-720L30) 0.1A/s~216.0A/s (PSW-1080L30) 0.01A/s~27.00A/s (PSW-360L80) 0.01A/s~54.00A/s (PSW-720L80) 0.01A/s~81.00A/s (PSW-1080L80) 0.01A/s~14.40A/s (PSW-360M160) 0.01A/s~28.80A/s (PSW-720M160) 0.01A/s~43.20A/s (PSW-1080M160) 0.001A/s ~ 9.000A/s (PSW-360M250) 0.01A/s ~ 18.00A/s (PSW-720M250) 0.01A/s ~ 27.00A/s (PSW-1080M250) 0.001A/s ~ 2.880A/s (PSW-360H800) 0.001A/s ~ 5.760A/s (PSW-720H800) 0.001A/s ~ 8.640A/s (PSW-1080H800)
Internal resistance setting	F-08	0.000Ω
Bleeder circuit control	F-09	1 = ON
Buzzer ON/OFF control	F-10	1 = ON
Measurement Average Setting	F-17	0 = Low
Lock Mode	F-19	0 = Panel lock: allow output off
USB/GPIB setting		
Rear Panel USB Mode	F-22	2 = USB CDC
GPIB address	F-23	8
LAN setting		
LAN	F-36	1 = Enable
DHCP	F-37	1 = Enable
Sockets active	F-57	1 = Enable
Web Server active	F-59	1 = Enable
Web password active	F-60	1 = Enable
Web setting password	F-61	0000
RS-232C		
Baud rate	F-71	7(115200bps)
Data bit	F-72	1(8bit)
Parity	F-73	0(none)
Stop bit	F-74	0(1bit)
Power On Configuration		
CV Control	F-90	0 = Panel control (local)
CC Control	F-91	0 = Panel control (local)
Power-ON Output	F-92	0 = OFF at startup
Master/Slave	F-93	0 = Master/Local
External Out Logic	F-94	0 = High ON
Power Switch trip	F-95	0 = Enable

6.2 Error Messages & Messages

The following error messages or messages may appear on the PSW screen during operation.

Error Messages	Description
Err 001	USB Mass Storage is not present
Err 002	No (such)file in USB mass storage
Err 003	Empty memory location
Err 004	File access error
Err 901	Keyboard CPLD error
Err 902	External control input and output error CPLD
Err 920	Over-range of the ADC calibration
Err 921	Over-range of the DAC calibration
Err 922	Calibration point invalid
Messages	Description
MSG 001	External control of output. Output off (F-94=0, High=on)
MSG 002	External control of output. Output off (F-94=1, Low=on)
MSG 003	Not connected. (F-93=1 or F-93=2)

LCD Display Format

Use the following table to read the LCD display messages.

0	1	2	3	4	5	6	7	8	9	A	B	C	D
0	1	2	3	4	5	6	7	8	9	A	b	C	d
E	F	G	H	I	J	K	L	M	N	O	P	Q	R
E	F	G	H	I	J	K	L	M	N	O	P	Q	R
S	T	U	V	W	X	Y	Z	()	+	-	,	
S	T	U	V	W	X	Y	Z	()	+	-	,	



TEXIO TECHNOLOGY CORPORATION

7F Towa Fudosan Shin Yokohama Bldg.

2-18-13, Shin Yokohama, Kohoku-ku, Yokohama, Kanagawa, 222-0033 Japan

<https://www.texio.co.jp/>
