

# INSTRUCTION MANUAL

## APPLICATION for DCS Series FREEWAVE



## 1.Overview

FreeWave is the application which operates the DCS series by remote control from PC via USB.

It is also possible to control the application by using GUI and the command. For details about commands, see the programming manual for the DCS series.

### 1-1.System requirements

Target	DCS-4605 DCS-7500 Series DCS-7500A Series DCS-9700 Series
OS	Microsoft Windows 7 (32bit / 64bit) or Higher
Required software	Microsoft .NET Framework ver4.5 full Microsoft Visual C++2010 Redistributable Package

Before you install the FreeWave, Check the required software by "Control panel > Add or remove program". Please install required software If you can't find.

You must have administrator account to install software.

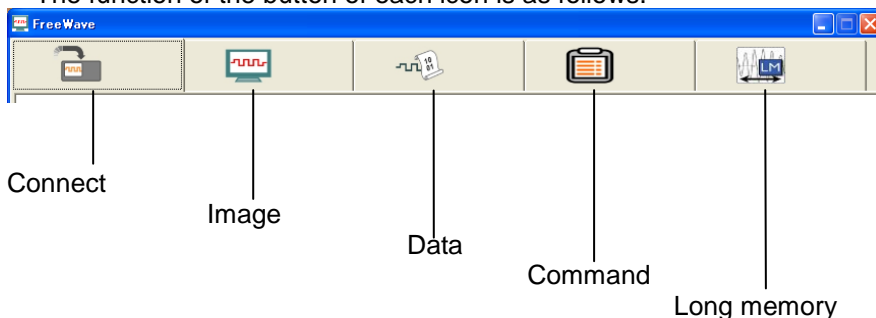
This application features and display may change to allow for the upgrade.

If the equipment other than the target model is connected, an application might not work correctly.

### 1-2.Icon

Each screen is switched by selecting icon in the upper part of the screen.

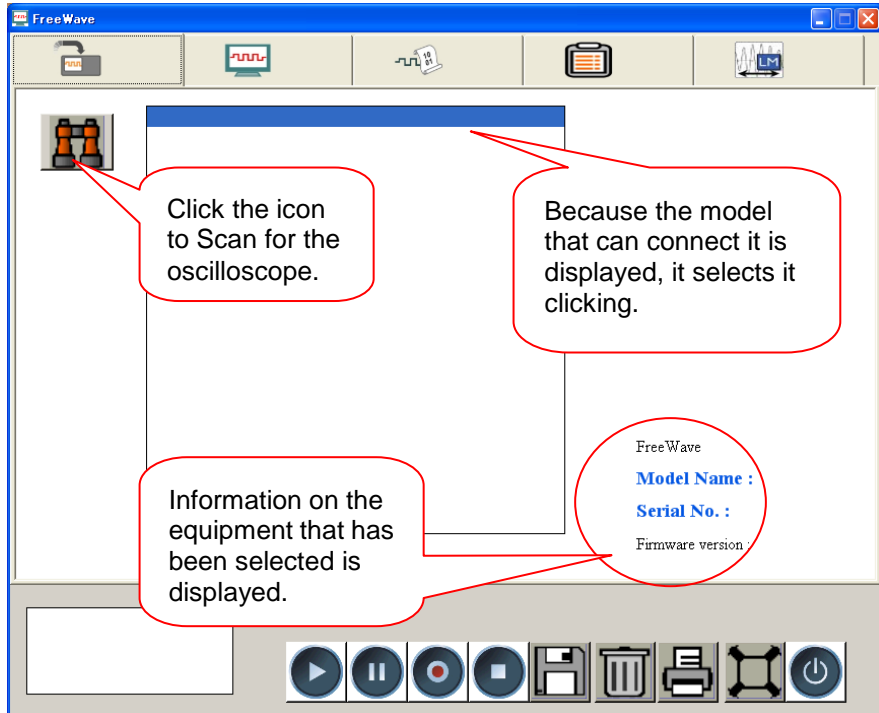
The function of the button of each icon is as follows.



## 2.Function

### 2-1.Connect screen

It is screen to select the model that controls from the Free Wave.



Click the scan icon to Scan for the oscilloscope.

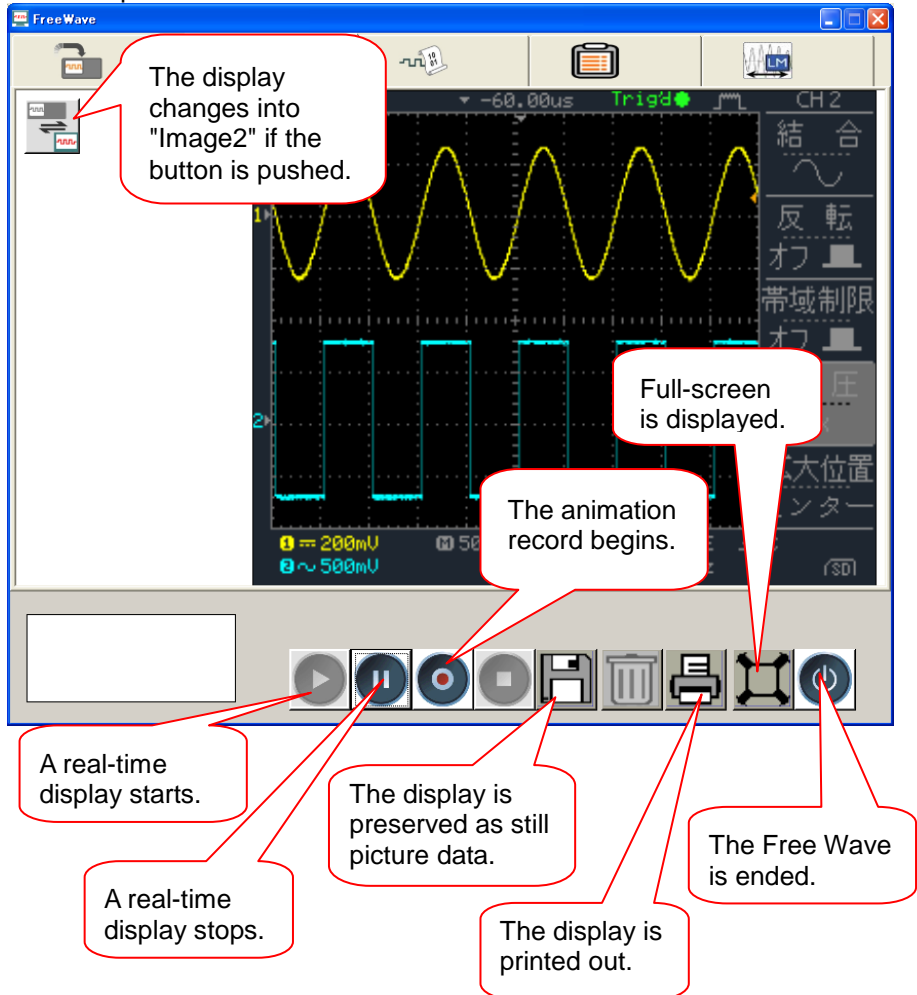
Depending on the environment of the PC may take a minute to startup and update.

## 2-2. Image screen 1

When the ▷ button under the screen is pushed, the display is in real time displayed.

The displayed image can be preserved as data in the printout and PC.

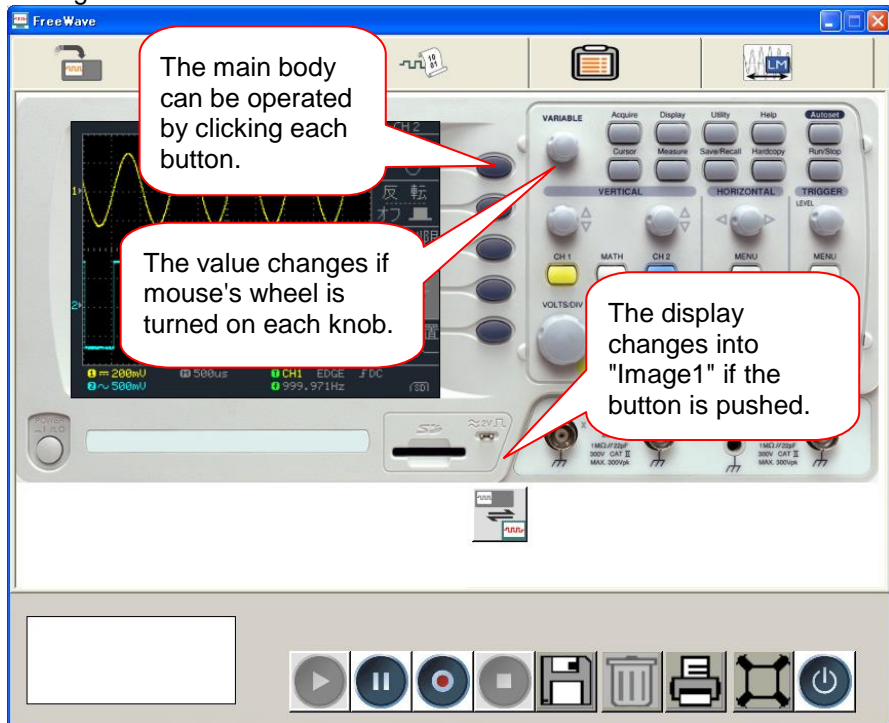
The image screen is two kinds, and changes into another type if the button on the left is pushed.



DCS-9700 series is not a real-time update for memory length is greater. Perform update the display when you press the ▷ button.

## 2-3. Image screen 2

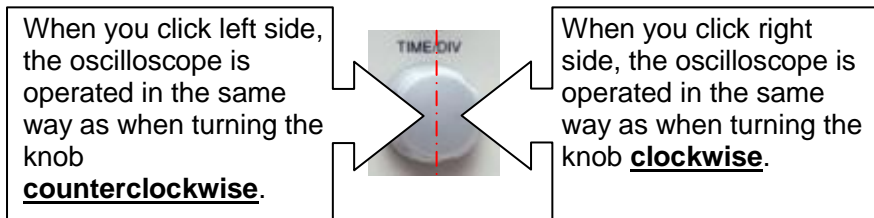
The main body can be operated by clicking the switch part of the panel, and turning mouse's wheel on the switch.




The screen can be preserved as a still picture or animation, and be printed out.

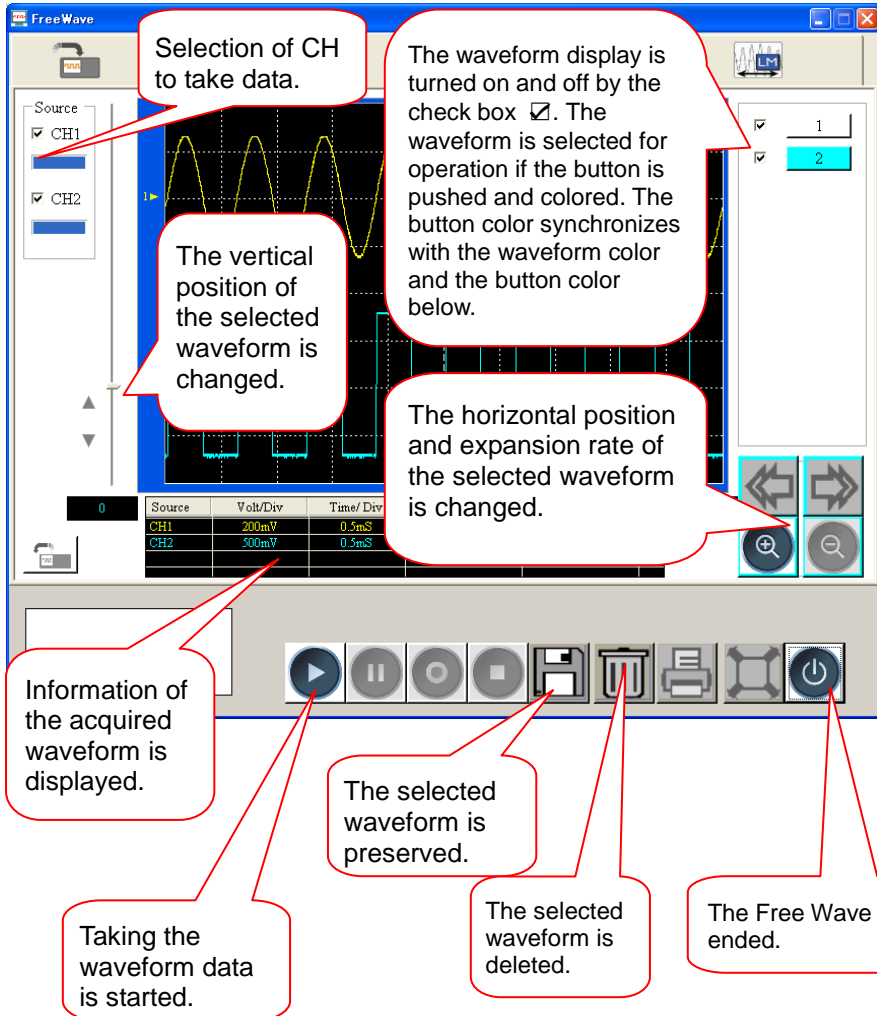
### •How to operate the knob.

When you operate a knob with a mouse, movement is different from the left half of the knob in the right half.



## 2-4.Data screen

When the  button under the screen is pushed, a waveform data (4k/ch) is taken into the Free Wave and displayed.



The screenshot shows the FreeWave software interface. It features a central display area showing two waveforms: a yellow sine wave (CH1) and a blue square wave (CH2). The interface includes a 'Source' panel on the left with checkboxes for CH1 and CH2. A table at the bottom displays waveform parameters. A toolbar at the bottom contains buttons for starting, pausing, and ending data acquisition, as well as saving, deleting, and printing waveforms. Callouts provide detailed explanations for these functions.

**Selection of CH to take data.**

The waveform display is turned on and off by the check box ☒. The waveform is selected for operation if the button is pushed and colored. The button color synchronizes with the waveform color and the button color below.

The vertical position of the selected waveform is changed.

The horizontal position and expansion rate of the selected waveform is changed.

Information of the acquired waveform is displayed.

Taking the waveform data is started.

The selected waveform is preserved.

The selected waveform is deleted.

The Free Wave is ended.

Source	Volt/Div	Time/Div
CH1	200mV	0.5mS
CH2	500mV	0.5mS

## 2-5.Command screen

The commands are displayed as the command tree at the left of the screen, and the command list can be made by selecting the command from the tree and moving to the command list in the right of the screen. After the command is listed, the command is sequentially executed from top of the list window when the ► button is pushed

The screenshot shows the 'Free Wave' software interface. On the left is a 'Command Tree' with a tree icon and a '+' button. In the center is a 'Command List' table. On the right is a 'Set/Query' table. At the bottom is a toolbar with icons for execution, deletion, and other functions. Callouts explain the workflow:

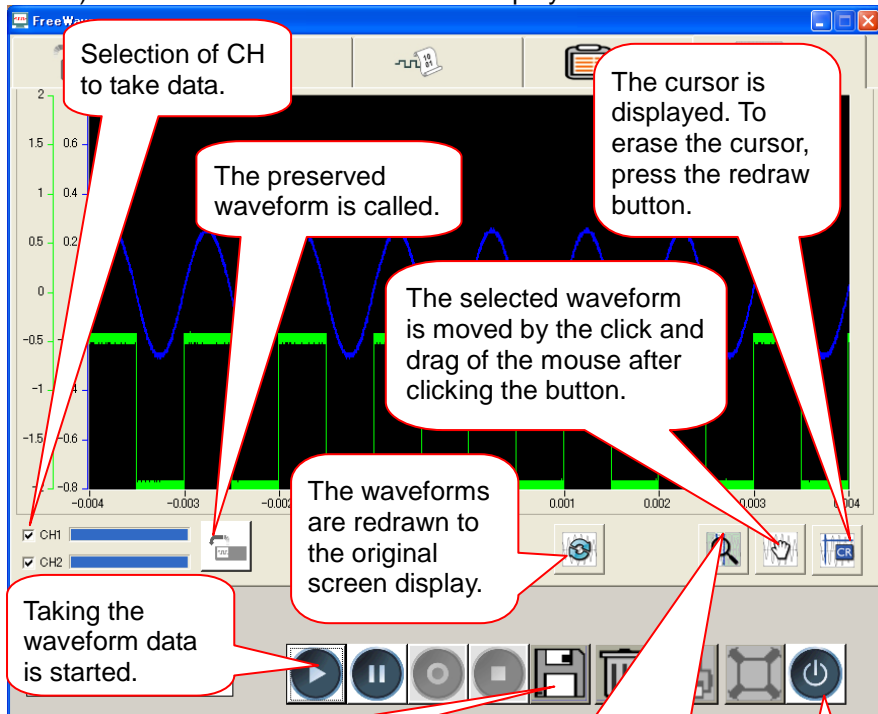
- The command is selected from the command tree, then the ⇒ button is pushed, and the command is moved to the command list of the right window. Because the commands are displayed as a tree, when the + part is clicked, the lower command is displayed.** (Points to the Command Tree)
- The command is selected.** (Points to the Command List)
- The response is displayed in query. Except query, double click and set a setting value.** (Points to the Set/Query table)
- The command is selected from a right and left table, and moved, or deleted.** (Points to the Command List)
- Query or the execution command is selected by double clicking.** (Points to the Command List)
- The preserved command list is called.** (Points to the Command List)
- The command list is preserved.** (Points to the Command List)
- The command list is executed.** (Points to the Play button in the toolbar)
- The command list is deleted.** (Points to the Delete button in the toolbar)
- The Free Wave is ended.** (Points to the Power button in the toolbar)

Value	Set/Query
MEAS.V	Query
RJ210...	Set
	Set
	Query

2010/02/01 10:21:15

## 2-6.Long memory screen

When the ► button under the screen is pushed, a waveform data (1M/ch or 2M/ch) is taken into the Free Wave and displayed.







## TEXIO TECHNOLOGY CORPORATION

7F Towa Fudosan Shin Yokohama Bldg., 2-18-13, Shin Yokohama, Kohoku-ku,  
Yokohama, Kanagawa, 222-0033, Japan.

<http://www.texio.co.jp/>

---